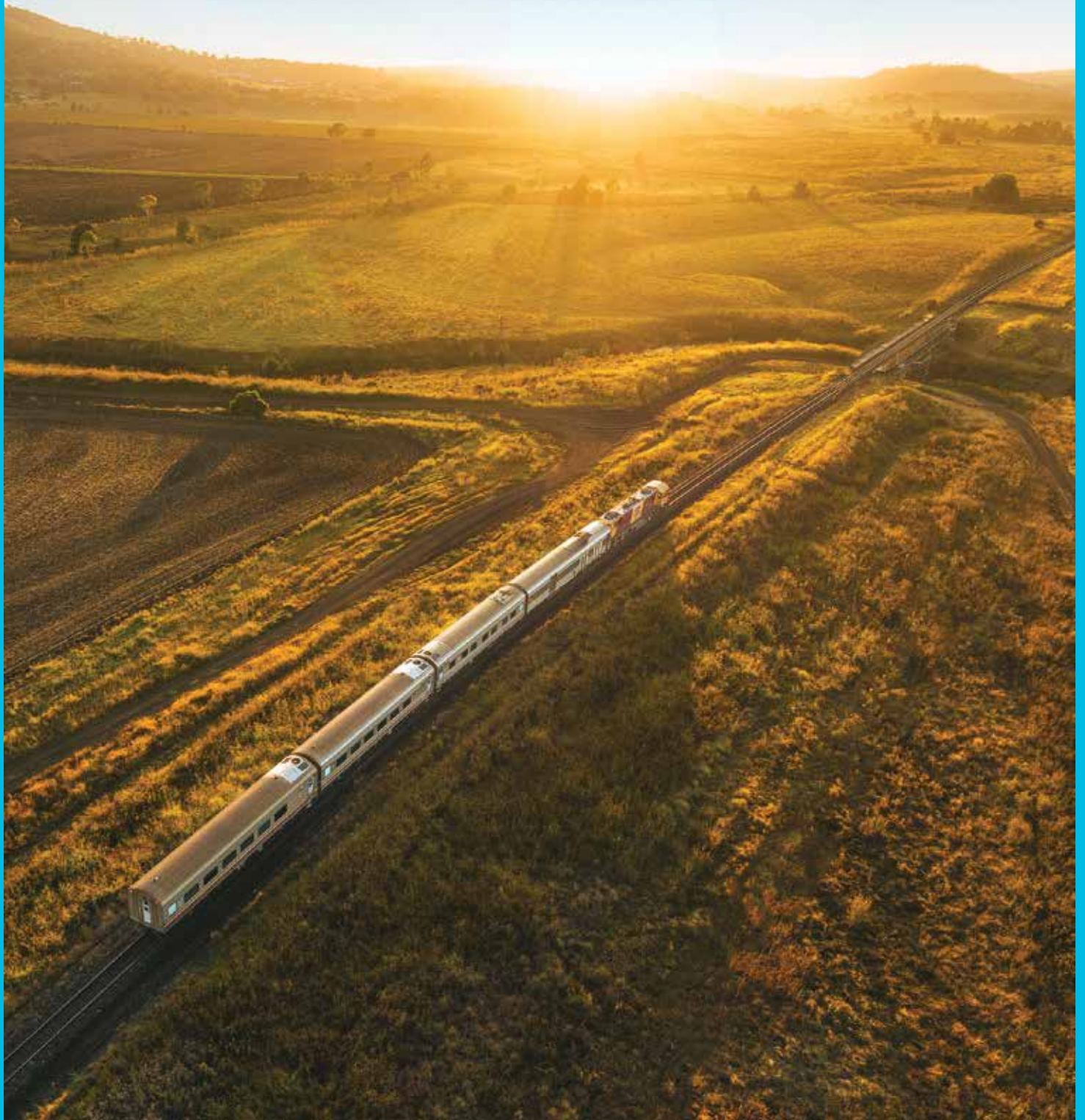


helloworld

TRAVEL

THE TRAVEL PROFESSIONALS

QUEENSLAND RAIL HOLIDAYS





EXPERIENCE QUEENSLAND WITH VIVA HOLIDAYS!

Experience the wonders of Queensland and rediscover the luxury of time on an unforgettable rail holiday. From a timeless journey along the beautiful Queensland coastline to an unforgettable experience in the heart of Queensland's Outback, travelling by train provides the opportunity to enjoy the passing scenery in comfort and make new friends along the way.

With over 50 years of experience in the travel business, trust us to make your dream Queensland rail holiday a reality.

CHOOSE VIVA HOLIDAYS AND LIVE A LIFE OF TRAVEL.





• Take a journey through World Heritage-listed wet tropics rainforest on the Kuranda Scenic Railway



Australian Age of Dinosaurs, Winton, Queensland

Courtesy of Tourism and Events Queensland



Michaelmas Cay, Tropical North Queensland

Courtesy of Tourism and Events Queensland

CONTENTS

Planning Your Rail Holiday	4
COASTAL QUEENSLAND	6
Tilt Train Rail Journey	7
Spirit of Queensland Rail Journey	8
Coastal Queensland Rail Holidays	9
Kuranda Scenic Railway	18
OUTBACK QUEENSLAND	20
Spirit of the Outback Rail Journey	21
Ultimate Outback Queensland Adventure – Fully Escorted Rail Tour	22
Outback Queensland Rail Holidays	23
GULF SAVANNAH	26
Gulflander Rail Journey	27
Gulf Savannah Rail Holidays	28
NORTH WEST & SOUTH WEST QUEENSLAND	31
Inlander Rail Journey	32
Westlander Rail Journey	32
South West Queensland Rail Holidays	33
Booking Conditions	35

PLANNING YOUR RAIL HOLIDAY

From the lush rainforest of the tropical north to the awe-inspiring landscapes and cultural heritage of Queensland's Outback, Queensland Rail Travel offers a choice of rail journeys that will allow you to uncover every part of Queensland.

EXPLORE COASTAL QUEENSLAND

The Tilt Train is fast becoming the most popular way to explore the coastline between Brisbane and Rockhampton in comfort and style. The Spirit of Queensland combines modern seating and an onboard café with the charm of long-distance rail travel. Contemporary and designed for relaxation, the train offers dedicated RailBed carriages to provide additional comfort on the overnight journey from Brisbane to Proserpine, Townsville and Cairns. While in Cairns, make sure you experience the breathtaking scenery of the tropics with a trip aboard the historic Kuranda Scenic Railway.

VENTURE TO QUEENSLAND'S OUTBACK

Queensland Rail Travel has Outback Queensland covered with rail journeys to Central Outback Queensland, the South-West and the North-West. Travel in comfort aboard the Spirit of the Outback from Brisbane to Longreach, home to the famous Australian Stockman's Hall of Fame and Qantas Founders Museum. Venture to Roma or Charleville aboard the Westlander. Or give in to your adventurous spirit and take the Inlander to the mineral-rich city of Mount Isa.

STEP BACK IN TIME IN GULF COUNTRY

Take a rail journey with a difference aboard the Gulflander, fondly referred to as the old 'tin hare'. Travelling between remote Normanton and Croydon, this historic little train will show you the incredible scenery of the Gulf.

Start planning your rail holiday and travel in style and comfort through some of Queensland's most scenic landscapes.





Spirit of the Outback



RailBed by day, Spirit of Queensland

LUGGAGE CHECK-IN

At most attended railway stations, luggage check-in facilities open one hour prior to departure for 30 minutes. The onboard team will assist with luggage at smaller unattended railway stations.



Customer assistance point at Roma Street railway station

ACCESSIBILITY INFORMATION

The level of accessibility varies at stations across Queensland and on board the trains. Your travel agent will be able to provide you with additional information to assist in planning your journey or visit the Queensland Rail Travel website.



Gulflander

CONCESSION FARES

On presentation of a current Australian state or territory Government Seniors Card, you will receive up to 50% off the full adult rail fare on Queensland Rail Travel's long-distance services. Queensland Pensioner Concession Card holders are eligible to receive four Queensland Pension rail travel entitlements each calendar year. An administration charge applies for the use of rail travel entitlements. Meals and upgrades to RailBed, Sleeper or Business Seat accommodation are an additional cost.

Queensland Pension entitlements are applied as follows for each journey:

- RailBed: Two one-way trips using two entitlements for each journey.
- Sleeper: Two one-way trips using two entitlements for each journey.
- Business Seat: Two one-way trips using two entitlements for each journey.
- Economy Seat: four one-way trips using one entitlement for each journey.



Whitehaven Beach, The Whitsundays, Queensland

Courtesy of Tourism and Events Queensland

COASTAL QUEENSLAND

Queensland's mainland coastline stretches almost 7000km and boasts some of the most beautiful beaches in the world. From the glistening sands of the Gold Coast to the stunning waterways of the Whitsundays, and World Heritage-listed rainforests of the tropical north, Queensland's coastline is waiting to be explored. It is also home to spectacular islands, including K'gari, the world's largest sand island off the Fraser Coast, magical Magnetic Island off Townsville and islands in the Whitsundays and Tropical North Queensland boasting stunning resorts.

Snorkel on the Great Barrier Reef, whale watch in peaceful Hervey Bay, take a scenic helicopter flight over the stunning Whitsunday Islands, sink your toes into the pure white silica sand of Whitehaven Beach, walk the beach where the rainforest meets the reef at Cape Tribulation, take a journey through World Heritage-listed wet tropics rainforest on the Kuranda Scenic Railway – all this and more awaits on a Queensland Coastal holiday.

Travel by Tilt Train between Brisbane and Rockhampton or watch the passing scenery onboard Spirit of Queensland as you journey to Cairns. Rail travel is truly the most relaxing way to experience everything Queensland's coastline has to offer.



Wanggoolba Creek, K'gari, Queensland

Courtesy of Tourism and Events Queensland



Great Barrier Reef, Tropical North Queensland



Magnetic Island, Queensland

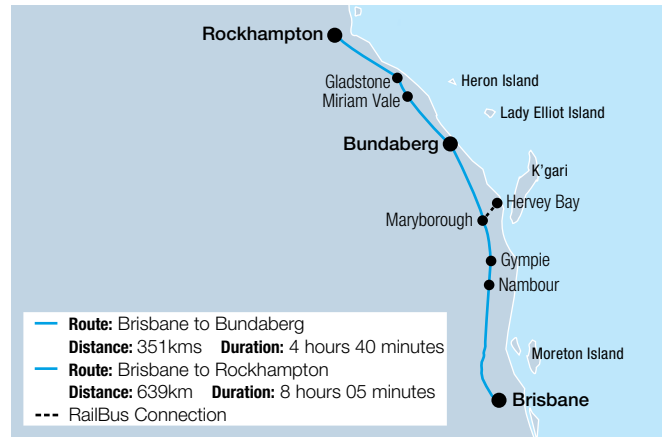
Courtesy of Tourism and Events Queensland



Tilt Train



Servery



TILT TRAIN RAIL JOURNEY

Take a relaxing journey on the Tilt Train to Hervey Bay for a spot of whale watching. Or travel further north and discover the wonders of the Southern Great Barrier Reef. Enjoy the convenience of an Economy Seat or upgrade to the comfort of a Business Seat.

FEATURES INCLUDE

- Complimentary Wi-Fi
- Overhead lockers and luggage racks
- Drinking fountains
- Tray table, reading light, drink holder, footrest and 240-volt power point, USB charging port
- Servery with choice of meal and refreshments
- Toilet facilities

ECONOMY SEAT

- Comfortable reclinable seat
- One item of checked-in luggage and one carry-on item

BUSINESS SEAT

- Spacious reclinable seat
- Two items of checked-in luggage and one carry-on item



Business Seat



Economy Seat

TIMETABLE

BRISBANE TO BUNDABERG

DEPARTS	MON, TUE, THU, FRI, SAT, SUN	MON, TUE, WED, THU, FRI, SUN
Brisbane	11:00am	4:55pm
Arrive Bundaberg	3:40pm	9:35pm

BUNDABERG TO BRISBANE

DEPARTS	MON, TUE, THU, FRI, SAT	DAILY
Bundaberg	5:15am	10:03am
Arrive Brisbane	9:55am	2:50pm

BRISBANE TO ROCKHAMPTON

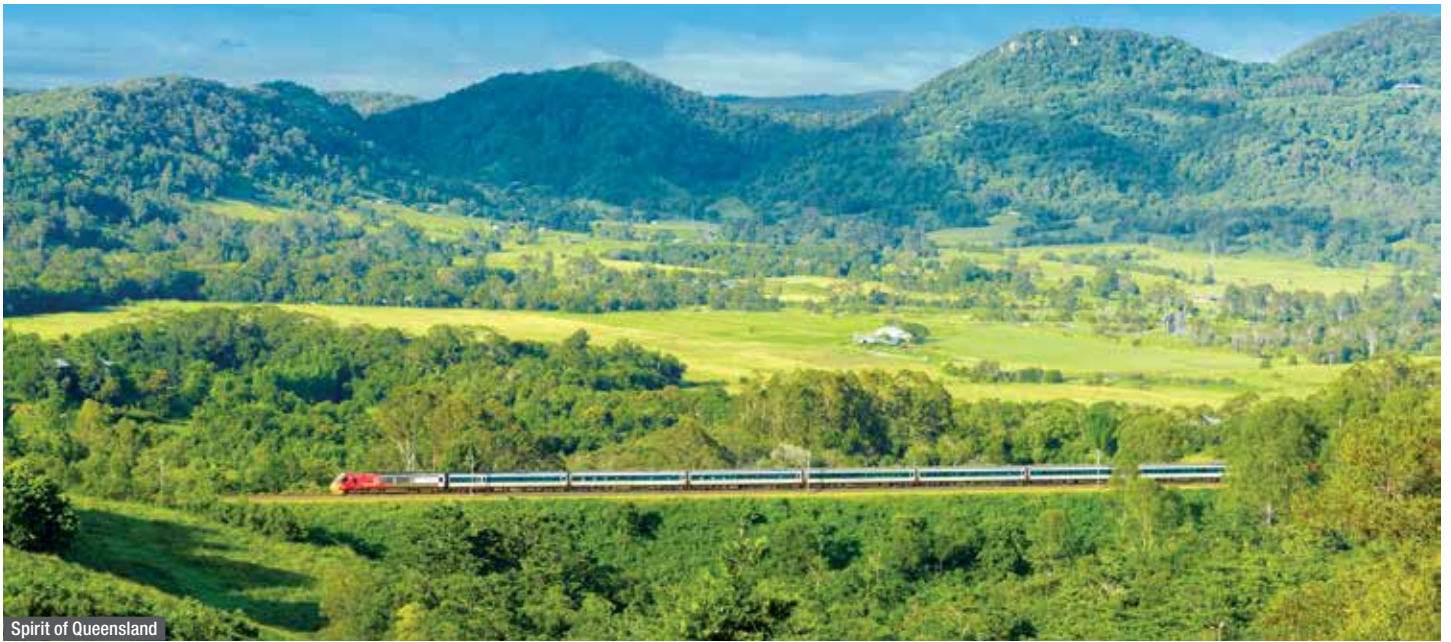
DEPARTS	MON, TUE, THU, FRI, SAT, SUN	SUN, TUE
Brisbane	11:00am	4:55pm
Arrive Rockhampton	7:05pm	1:00am

ROCKHAMPTON TO BRISBANE

DEPARTS	DAILY
Rockhampton	6:45am
Arrive Brisbane	2:50pm

Timetable is correct at time of printing and is subject to change without notice. The RailBus Coach Connection offers a convenient transfer from Maryborough West to Hervey Bay and can be booked as part of your rail travel. For information on the latest fares and availability, please ask your travel agent.

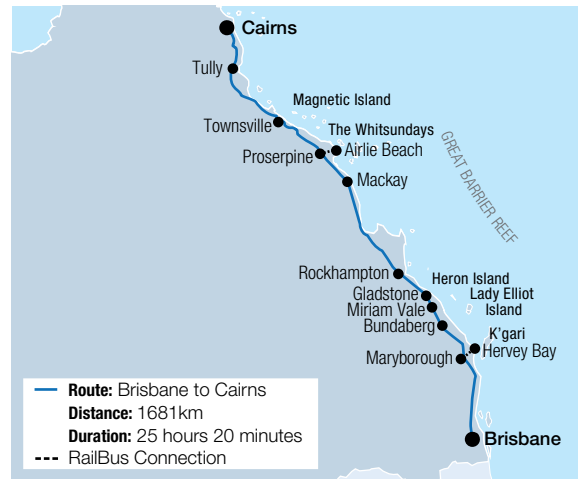
COASTAL QUEENSLAND



Spirit of Queensland



Economy Seat



SPIRIT OF QUEENSLAND RAIL JOURNEY

Rediscover the luxury of time with a rail journey along Queensland's coast aboard the Spirit of Queensland. With regular services each week and daylight travel between Proserpine and Cairns, it's a great way to travel to some of Queensland's spectacular holiday destinations.

FEATURES INCLUDE

- Café offering a selection of meals and refreshments • Drinking fountains
- Tray table, reading light, drink holder, footrest and 240-volt power point
- Shower and toilet facilities

ECONOMY SEAT

- Comfortable reclinable seat
- One item of checked-in luggage and one carry-on item

RAILBED

- Seat converts to a lie-flat bed at night
- All-inclusive in-seat dining experience including two course meals with complimentary beverage
- Linen, pillow, towel and complimentary amenities pack
- On-demand entertainment
- Two items of checked-in luggage and one carry-on item



RailBed by night



RailBed by day

TIMETABLE

BRISBANE TO CAIRNS (OVERNIGHT)

DEPARTS	MON, WED, FRI, SAT
Brisbane	3:45pm
Proserpine	7:16am [^]
Townsville	10:40am
Arrive Cairns	5:05pm

CAIRNS TO BRISBANE (OVERNIGHT)

DEPARTS	MON, WED, FRI, SUN
Cairns	7:40am
Townsville	1:56pm
Proserpine	5:16pm [^]
Maryborough West	4:17am [^]
Arrive Brisbane	9:00am

Timetable is correct at time of printing and is subject to change without notice. [^]RailBus Coach Connection service available. The RailBus Coach Connection offers a convenient transfer from Proserpine Station to Airlie Beach and from Maryborough West to Hervey Bay and can be booked as part of your rail travel. For information on the latest fares and availability, please ask your travel agent.



Hervey Bay, Queensland

HERVEY BAY & K'GARI GETAWAY 4 DAYS

Day 1: Brisbane to Hervey Bay

Hop aboard the Tilt Train to the Fraser Coast and transfer with a RailBus connection from Maryborough West to Hervey Bay. Stay the next three nights at Ramada Resort by Wyndham Hervey Bay.

Day 2: K'gari (BL)

After breakfast, join a full day 4WD guided tour of K'gari and learn about the natural and cultural history of the island. Swim in the crystal-clear, blue waters of Lake McKenzie, the island's most beautiful perched lake. Enjoy lunch and a drive along spectacular Seventy Five Mile Beach. Stop to swim in the cool fresh waters of Eli Creek and marvel at the coloured sands of the Pinnacles.

Day 3: Hervey Bay (B)

Spend the day at leisure exploring the beautiful coastal town of Hervey Bay. Perhaps take a bicycle ride along the picturesque foreshore, visit the Fraser Coast Discovery Sphere, or from July to October, enjoy a whale watching cruise (Whale Watch Adventure option).

Day 4: Hervey Bay to Brisbane (B)

After breakfast, catch your RailBus connection transfer to Maryborough West railway station for the Tilt Train journey back to Brisbane. Relax in your reclinable seat and take in the passing scenery of South East Queensland.

(B = breakfast, L = lunch)

4 DAY WHALE WATCH ADVENTURE

Add an afternoon Whale Watch cruise to your Hervey Bay and K'gari Getaway and see the Humpback whales in the calm waters of Hervey Bay (Jul – Oct).

Adult **From \$975*** per person twin share Senior **From \$905*** per person twin share
Sole use prices also available.

4 DAYS | BRISBANE TO BRISBANE

DEPARTS: Mon, Tue, Thu, Fri, Sat, Sun (1 Apr 25 – 31 Mar 26)

Adult **From \$815*** per person twin share
Senior **From \$745*** per person twin share

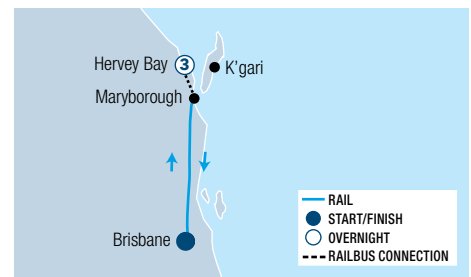
HIGHLIGHTS

- Walk along the Urangan Pier
- See the Maheno Shipwreck on K'gari
- Swim in the crystal waters of Lake McKenzie

INCLUDES

- Return travel on the Tilt Train from Brisbane to Maryborough West – Economy Seat
- 3 nights 4 star accommodation in Hervey Bay
- Meals as specified
- Full day K'gari Explorer Day Tour
- Return RailBus connection from Maryborough West railway station to Hervey Bay transit centre

Sole use prices also available.



Wangoolba Creek, K'gari, Queensland

K'GARI ESCAPE 4 DAYS

Day 1: Brisbane to Hervey Bay

Travel aboard the Tilt Train to Maryborough and transfer to Hervey Bay by RailBus connection. Overnight at Ramada Resort by Wyndham Hervey Bay.

Day 2: Hervey Bay to K'gari (BL)

You will be collected from your accommodation and transferred to River Heads for the ferry crossing to Kingfisher Bay landing on K'gari.

Head inland by 4WD coach and visit Central Station and Pile Valley before cooling off in the crystal-clear water of Lake McKenzie. Stay tonight at K'gari Beach Resort.

Day 3: K'gari to Hervey Bay (BL)

Enjoy a buffet breakfast before setting off to explore iconic Eli Creek where you can float along the shallow stream. Head to The Pinnacles Coloured Sands and learn about the Indigenous Dreamtime stories that surround them. Travel past Indian Head, the most

easterly point of the island, to the Champagne Pools. Return along 75 Mile Beach and stop at the Maheno Shipwreck before boarding the ferry for the return trip to River Heads and your overnight accommodation at Ramada Resort by Wyndham Hervey Bay.

Day 4: Hervey Bay to Brisbane (B)

After breakfast, transfer by RailBus connection to Maryborough West railway station for the journey to Brisbane on the Tilt Train. Relax in your reclinable seat and take in the passing scenery before arriving in Brisbane in the afternoon.

(B = breakfast, L = lunch)

4 DAYS | BRISBANE TO BRISBANE

DEPARTS: Mon, Tue, Thu, Fri, Sat, Sun (1 Apr 25 – 31 Mar 26)

Adult **From \$1135*** per person twin share
Senior **From \$1065*** per person twin share

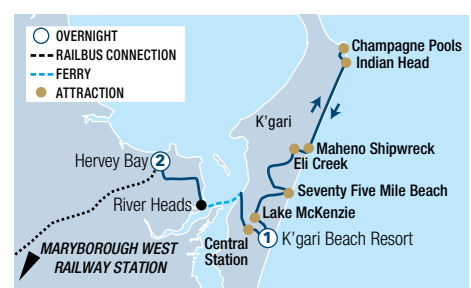
HIGHLIGHTS

- Take a dip in Lake McKenzie
- Marvel at the Pinnacles Coloured Sands
- Float downstream in Eli Creek

INCLUDES

- Return travel on the Tilt Train from Brisbane to Maryborough West – Economy Seat
- 2 nights 4 star accommodation in Hervey Bay
- 1 night 4 star accommodation at K'gari Beach Resort
- Meals as specified
- National Park fees
- 2 day guided 4WD coach touring on K'gari
- Return RailBus connection from Maryborough West railway station to Hervey Bay transit centre

Sole use prices also available. Itinerary may vary due to tides, seasons and weather conditions.



COASTAL QUEENSLAND



Bundaberg Rum Distillery, Bundaberg East, Queensland

Courtesy of Tourism and Events Queensland

BUNDABERG BREAKAWAY 4 DAYS

Day 1: Brisbane to Bundaberg

Join the Tilt Train in Brisbane and sit back and relax as you travel north to Bundaberg. Arrive in Bundaberg early evening and transfer to your accommodation in the town of Bargara. Stay the next three nights at Kellys Beach Resort, Bargara.

Day 2: Bargara (B)

Spend today at leisure exploring the beautiful seaside village of Bargara. Take a walk along the picturesque foreshore or visit the Amandine Lavender farm (own expense). From January to March see the baby turtle hatchlings emerge from their nest at Mon Repos Conservation Park. Explore the conservation park with a Ranger guide and learn about turtle conservation (own expense).

Day 3: Bundaberg (B)

Enjoy a leisurely breakfast and relax in the tropical surroundings of the resort. Transfer to the Windmill Café for a delicious lunch by the sea (own expense).

After lunch, take a self-guided tour through the iconic Bundaberg Barrel and learn about the history of this family-owned company, the craft of brewing drinks and the locally sourced produce farmed in Bundaberg.

Visit the famous Bundaberg Rum Distillery and tour the interactive museum. After exploring the Bundaberg Rum Museum, join an expert guide and journey deep into the heart of a fully operational distillery.

Day 4: Bundaberg to Brisbane (B)

Transfer to Bundaberg railway station for the Tilt Train journey back to Brisbane.

(B = breakfast)

4 DAYS | BRISBANE TO BRISBANE

DEPARTS: Mon, Tue, Thu, Fri, Sat, Sun (1 Apr 25 – 28 Mar 26)*

Adult **From \$825***
per person twin share

Senior **From \$759***
per person twin share

HIGHLIGHTS

- Explore the seaside town of Bargara
- Take a stroll along Kellys Beach
- Join a guided tour of the Rum Distillery

INCLUDES

- Return travel on the Tilt Train from Brisbane to Bundaberg – Economy Seat
- 3 nights 3½ star accommodation in Bargara
- Meals as specified
- Bundaberg Barrel Tasting and self-guided Gallery Tour with transfers
- Admission to Bundaberg Rum Museum and Distillery Experience Tour with transfers
- Return coach transfers from Bundaberg railway station to Bargara

Sole use prices also available. + Blockout dates apply.



Suspension Bridge at Capricorn Caves, Queensland

Courtesy of Tourism and Events Queensland

CAPRICORN COAST DISCOVERY 6 DAYS

Day 1: Brisbane to Rockhampton

This morning, depart on the Tilt Train to Rockhampton. On arrival, make your own way to your accommodation. Stay the next two nights at Empire Apartment Hotel, Rockhampton.

Day 2: Rockhampton

Spend the day at leisure exploring the town of Rockhampton. Stroll along the Fitzroy River and see many restored sandstone Victorian era buildings. Visit the beautiful Botanic Gardens or head to the Rockhampton Art Gallery to view mid-twentieth century Australian art.

Day 3: Capricorn Caves to Yeppoon

This morning, visit the Capricorn Caves. Take a tour through large caverns with remarkable decorations, rare ferns and massive tree roots. The domed Cathedral Cave is renowned for its acoustics. At the end of the tour, walk through the pioneer passage on to a swinging suspended bridge in the rainforest. In the afternoon, transfer to Yeppoon and stay three nights at Salt Yeppoon.

Day 4: Yeppoon

Today is free to discover Yeppoon. Visit the lagoon on the foreshore or wander the main street and take in the eclectic collection of street art.

Day 5: Great Keppel Island (L)

Discover the beauty of Great Keppel Island on a full day cruise. Enjoy time swimming and snorkelling at Fisherman's Beach or stay dry and discover the colourful marine life from the comfort of a glass bottom boat.

Day 6: Rockhampton to Brisbane

Transfer to Rockhampton railway station for your return rail journey to Brisbane.

(L = lunch)

6 DAYS | BRISBANE TO BRISBANE

DEPARTS: Sat (1 Apr – 19 Dec 25, 3 Jan – 31 Mar 26)

Adult **From \$1365***
per person twin share

Senior **From \$1299***
per person twin share

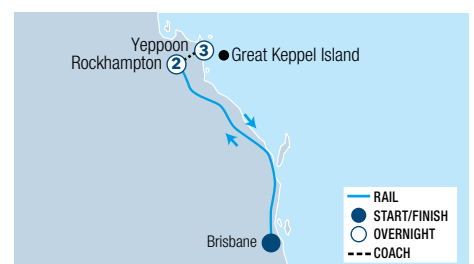
HIGHLIGHTS

- Explore Rockhampton's historic Quay Street
- Take a Cathedral Cave Tour
- Swim in the crystal-clear waters at Great Keppel Island

INCLUDES

- Return travel on the Tilt Train from Brisbane to Rockhampton – Economy Seat
- 2 nights 4½ star accommodation in Rockhampton
- 3 nights 4½ star accommodation in Yeppoon
- Meals as specified
- Capricorn Caves Tour
- Full day Great Keppel Island Adventure Cruise with transfers
- Return coach transfers from Rockhampton to Yeppoon

Sole use prices also available.



* FROM PRICES ARE A GUIDE ONLY, subject to change and availability and are in Australian Dollars. Prices for rail packages are per person per package twin share, unless otherwise specified and based on the lowest room category for travel in low season. For full terms and conditions including pricing, conditions and senior concession eligibility, refer to the Booking Conditions on the inside back cover of this brochure.



Whitehaven Beach, Queensland

Courtesy of Tourism and Events Queensland

WHITSUNDAY ESCAPE 6 DAYS

Day 1: Airlie Beach

Arrive in Airlie Beach and check in to your hotel. Late afternoon, cruise around Pioneer Bay and sip a glass of sparkling wine as you take in a magnificent sunset. Stay the next four nights at At Boathaven Bay Holiday Apartments, Airlie Beach.

Day 2: Airlie Beach

Today is free to explore the beautiful Whitsundays. You might like to spend the day on Hamilton Island or cruise to the Great Barrier Reef (see optional tours below).

Day 3: Whitehaven Beach

Enjoy a leisurely start to the day. This afternoon, cruise to beautiful Whitehaven Beach on Whitsunday Island. Journey across the beautiful Whitsunday passage and take in the hidden bays dotted throughout this tropical paradise. Spend time swimming in the crystal-clear water or just relax on the pure white silica sand beach.

Day 4: Airlie Beach

Do as little or as much as you please today. Head to Airlie Beach Lagoon for a dip, enjoy lunch at one of the many cafes and restaurants in Airlie Beach village or take a day tour and explore the hinterland.

Day 5: Proserpine to Brisbane (D)

Check out of your accommodation this morning. Spend the day relaxing by the resort or do some last-minute souvenir shopping. In the late afternoon, transfer to Proserpine by RailBus connection for your overnight journey on board Spirit of Queensland to Brisbane.

Day 6: Brisbane (B)

Arrive in Brisbane in the morning where your holiday concludes.

(B = breakfast, D = dinner)

6 DAYS | AIRLIE BEACH TO BRISBANE

DEPARTS: Mon, Wed, Thu, Sat (2 Apr – 14 Sep, 6 Oct – 14 Dec 25)

Adult	From \$885* per person twin share
Senior	From \$819* per person twin share

HIGHLIGHTS

- Explore the coastal town of Airlie Beach
- Walk along the fine white silica sand on Whitehaven Beach
- Take in the stunning scenery of the beautiful Whitsunday islands

INCLUDES

- 4 nights 4 star accommodation in Airlie Beach
- Meals as specified
- Sundowner Sunset Cruise
- Afternoon Whitsunday Island & Whitehaven Beach Cruise
- One way RailBus connection from Airlie Beach accommodation to Proserpine railway station
- One way travel on the Spirit of Queensland from Proserpine to Brisbane – RailBed

Sole use prices also available.



GREAT BARRIER REEF ADVENTURE

Cruise through Whitsunday Islands National Park en route to the outer Great Barrier Reef, one of the world's most stunning natural attractions. Dive off the pontoon to explore the wonders of the reef – see magnificent coral, colourful fish and other marine life. If you prefer to stay dry, discover the amazing underwater world from the spectacular underwater viewing chambers or on the semi-submersible submarine.

Includes:

- 4 hours at Cruise Whitsundays reef pontoon on Hardy Reef • Semi-submersible rides
- Use of snorkelling equipment and wetsuits
- Sundeck • Underwater viewing chamber
- Morning and afternoon tea • Buffet lunch

Operator: Cruise Whitsundays

Duration: 8 – 10 hours

Departs: Daily from Port of Airlie at 8am

	Adult	Senior
Full Day Tour	\$319*	\$289*



Catseye Beach, Hamilton Island, Queensland

Courtesy of Tourism and Events Queensland

SPEND THE DAY ON HAMILTON ISLAND

Why not spend the day on beautiful Hamilton Island. Take the direct service from Port of Airlie at 8am to maximise your time on the island. Return on the direct service departing Hamilton Island at 5:10pm or take one of the earlier transfers and enjoy an extended cruise of the Whitsunday Passage as guests are collected from Daydream Island.

Includes:

- Return catamaran transfers
- Lunch at the Marina Tavern

Operator: Cruise Whitsundays

Duration: Up to 10 hours

Departs: Daily from Port of Airlie at 8am

	Adult	Senior
Full Day Tour	\$146*	\$138*

*FROM PRICES ARE A GUIDE ONLY, subject to change and availability and are in Australian Dollars. Unless otherwise specified, prices for day tours are per person and prices for rail packages are per person per package twin share based on the lowest room category for travel in low season. For full terms and conditions including pricing, conditions and senior concession eligibility, refer to the Booking Conditions on the inside back cover of this brochure.

COASTAL QUEENSLAND



M.V. Whitsunday Explorer



M.V. Whitsunday Explorer



M.V. Whitsunday Explorer

7 DAYS | HAMILTON ISLAND TO BRISBANE

DEPARTS: Wednesdays (2 Apr – 16 Sep, 1 Oct – 16 Dec 25, 14 Jan – 31 Mar 26)

Adult	From \$2879* per person twin share
Senior	From \$2835* per person twin share

HIGHLIGHTS

- Spend two nights on stunning Hamilton Island
- Relax on tropical Catseye Beach
- Cruise the beautiful waterways of the Whitsundays
- Visit uninhabited Whitsundays islands
- See the breathtaking contrast of brilliant white sand and bright blue water at Whitehaven Beach
- Take a leisurely stroll to Hill Inlet Lookout
- Spend time at Langford Island and discover the underwater world on the fringing coral reef
- Discover the coastal town of Airlie Beach

INCLUDES

- 2 nights accommodation in a Garden View Room at Reef View Hotel, Hamilton Island
- 2 nights onboard Whitsunday Explorer
- 1 night 4 star accommodation in Airlie Beach
- Meals as specified
- One way RailBus connection from Airlie Beach accommodation to Proserpine railway station
- One way travel on the Spirit of Queensland from Proserpine to Brisbane – RailBed

Sole use prices also available.



Hamilton Island, Queensland

WHITSUNDAY EXPLORER 7 DAYS

Day 1: Hamilton Island

Arrive on Hamilton Island and check into the Reef View Hotel. Stay the next two nights on Hamilton Island.

Day 2: Hamilton Island (B)

Today is free to do as little or as much as you please. Relax by the pool, take a day cruise to the Great Barrier Reef or take in a stunning sunset from One Tree Hill.

Day 3: Hamilton Island/Whitsunday Island Cruise (BD)

Enjoy a relaxing morning before checking out of your hotel. Perhaps head to the marina for lunch before boarding the 45m M.V. Whitsunday Explorer for a two night cruise through the beautiful Whitsunday Passage. Pass through the Molle Island group before dropping anchor at Cid Harbour for the evening, a tranquil and spacious sheltered harbour. Partake in drinks on the observation deck before settling into the main saloon for dinner.

Day 4: Cruising the Whitsundays (BLD)

Start your day with an alfresco breakfast on the upper deck or in the main saloon, as you sail past Henning, Dent and Hamilton Islands before dropping anchor near Whitsunday Island. Hop aboard the high-speed rigid inflatable boat, Island Adventurer, and head to the brilliant white sands of world-famous Whitehaven Beach. Head back to the Whitsunday Explorer for lunch and sail to Chalkies Beach on Hazelbrook Island. This island boasts a white sand beach, picturesque shore walls and

coral ecosystems, perfect for snorkelling. Hop back on board and cruise south to Long Island, where you will anchor overnight. Long Island is considered one of the most beautiful of the Whitsunday Islands and has 13 kilometres of graded walking tracks, secluded beaches, dramatic headlands and dense bush areas. Enjoy dinner in the main saloon and treat yourself to a nightcap under the stars on the observation deck.

Day 5: Airlie Beach (B)

Enjoy breakfast before exploring Long Island's shores at your leisure. Afterwards, cruise back to Airlie Beach, arriving around 11am. Farewell your fellow cruise companions and transfer to your hotel. The remainder of the day is free to discover Airlie Beach. Overnight at Heart Hotel and Gallery Whitsundays.

Day 6: Airlie Beach to Brisbane (BD)

Check out of your hotel and spend the day at leisure. In the late afternoon, transfer by coach to Proserpine for your rail journey to Brisbane. Overnight onboard Spirit of Queensland.

Day 7: Brisbane (B)

Arrive in Brisbane in the morning where your holiday concludes.

(B = breakfast, L = lunch, D = Dinner)



* FROM PRICES ARE A GUIDE ONLY, subject to change and availability and are in Australian Dollars. Prices for rail packages are per person per package twin share, unless otherwise specified and based on the lowest room category for travel in low season. For full terms and conditions including pricing, conditions and senior concession eligibility, refer to the Booking Conditions on the inside back cover of this brochure.



Picnic Bay, Magnetic Island, Queensland

Courtesy of Tourism and Events Queensland



The Strand, Townsville, Queensland

Courtesy of Tourism and Events Queensland



Queens Gardens, Townsville, Queensland

Courtesy of Tourism and Events Queensland



Hawkins Point, Magnetic Island, Queensland

Courtesy of Tourism and Events Queensland

6 DAYS | BRISBANE TO TOWNSVILLE

DEPARTS: Mon, Fri, Sat (4 Apr 25- 31 Mar 26)+

Adult	From \$949* per person twin share
Senior	From \$905* per person twin share

HIGHLIGHTS

- Take a scenic rail journey along the Queensland coast aboard the Spirit of Queensland
- Enjoy stunning views from the top of Castle Hill in Townsville
- Visit The Strand beachfront promenade
- Swim in the crystal-clear waters of Horseshoe Bay
- Spot a koala as you hike one of the many walking trails in Magnetic Island National Park
- Explore Magnetic Island's secluded beaches
- Look for turtles as you walk along Picnic Bay Jetty

INCLUDES

- One way overnight travel on the Spirit of Queensland from Brisbane to Townsville – RailBed
- 1 night 4 star accommodation in Townsville
- 3 nights 4 star accommodation on Magnetic Island
- Meals as specified
- Maggie Comprehensive Tour
- Return ferry transfers to Magnetic Island

Sole use prices also available. + Blockout dates apply.

TOWNSVILLE & MAGNETIC ISLAND EXPERIENCE 6 DAYS

Day 1: Brisbane to Townsville (D)

Join the Spirit of Queensland in Brisbane for a scenic rail journey to Townsville. Relax onboard in your spacious RailBed and enjoy the personal in-seat entertainment and an evening meal. Overnight onboard Spirit of Queensland.

Day 2: Townsville (B)

Arrive in Townsville in the morning and spend the day at leisure exploring Townsville. Head to Castle Hill lookout and take in the spectacular views of Townsville. Stroll along The Strand and cool off in the seawater rock-pool or simply laze on the beach and enjoy the views of Magnetic Island. Overnight at Rydges Southbank Townsville.

Day 3: Townsville to Magnetic Island (B)

Spend the morning exploring the city. Take in the iconic sites of Townsville including Palmer Street and the Queens Gardens. Visit the Museum of Tropical Queensland and learn about the history and heritage of North Queensland or head to the Museum of Underwater Art and see the many underwater art installations including the Coral Greenhouse (own expense).

In the afternoon, take a trip to beautiful Magnetic Island on board a high-speed catamaran. Stay the next three nights at Grand Mercure Apartments Magnetic Island.

Day 4: Magnetic Island

See all the major sights of beautiful Magnetic Island on a guided tour. Learn about the history, native wildlife and flora and fauna. Visit Cockle Bay, Rocky Bay lookout and enjoy a picnic morning tea at the Heritage listed Picnic Bay Jetty. Spot an Allied Rock Wallaby at Geoffrey Bay before heading to Horseshoe Bay for a refreshing swim and lunch (own expense).

Day 5: Magnetic Island

Today is yours to explore Magnetic Island at your own pace. Having a unique natural environment of palm-fringed beaches, large granite boulders, sandy beaches and fringing coral reefs, there are plenty of things to see and do on this island paradise. Relax on one of the beaches, dip your toe in the crystal-clear waters of Nelly Bay or visit the old Gun Batteries and Fort Buildings and learn about Australia's war history. Alternatively, spend the day by the resort's rooftop pool and take in the magnificent views of the Coral Sea.

Day 6: Townsville

Travel by ferry back to the mainland, where your holiday concludes.

(B = breakfast, D = dinner)



*FROM PRICES ARE A GUIDE ONLY, subject to change and availability and are in Australian Dollars. Prices for rail packages are per person per package twin share, unless otherwise specified and based on the lowest room category for travel in low season. For full terms and conditions including pricing, conditions and senior concession eligibility, refer to the Booking Conditions on the inside back cover of this brochure.

COASTAL QUEENSLAND



Skyrail Rainforest Cableway, Cairns, Queensland



Cairns Esplanade, Queensland



Kuranda Scenic Railway, Tropical North Queensland

6 DAYS | BRISBANE TO CAIRNS

DEPARTS: Mon, Wed, Sat (2 Apr 25 – 31 Mar 26)⁺

Adult **From \$1495***
per person twin share

Senior **From \$1407***
per person twin share

HIGHLIGHTS

- Experience the famous Kuranda Scenic Railway and admire the ever-changing scenery
- Ride the Skyrail Rainforest Cableway
- See a traditional indigenous smoking ceremony
- Learn about bush foods on the guided Mayi Bugarin Rainforest Trail
- Wander through the quaint village of Kuranda
- See the sprawling tropical gardens at Paronella Park
- Stroll along the Cairns Esplanade

INCLUDES

- One way overnight travel on the Spirit of Queensland from Brisbane to Cairns – RailBed
- 4 nights 4½ star accommodation in Cairns
- Meals as specified
- Half day Hands On Country Eco Tour
- Full day Kuranda Scenic Railway and Skyrail Rainforest Cableway Tour
- Full day Tablelands, Waterfalls, Rainforest & Paronella Park Tour

Sole use prices also available. ⁺Blockout dates apply.



Paronella Park, Mena Creek, Tropical North Queensland

BEST OF CAIRNS 6 DAYS

Day 1: Brisbane to Cairns (D)

Join the Spirit of Queensland in Brisbane and settle into your RailBed. Choose to watch a movie on the state-of-the-art personal entertainment system and watch the scenery pass by as you journey along Queensland's immense coastline.

Day 2: Cairns (BL)

This morning you will pass through the sugar cane fields of North Queensland. Sit back and relax as you watch the changing landscapes. Arrive in Cairns this afternoon and make your own way to your accommodation. Stay the next four nights at Pacific Hotel Cairns.

Day 3: Cairns (B)

After breakfast join a half day tour and discover an unforgettable Indigenous cultural experience right on the doorstep of Cairns. You will be welcomed with a traditional smoking and cleansing ceremony. The Mandingalbay Yidinji people will personally guide you, sharing ancient knowledge and insights into Indigenous customs. Walk along the Mayi Bugarin Rainforest Trail and discover bush foods, tools and sites of cultural significance.

Day 4: Kuranda (B)

Today experience the historic Kuranda Scenic Railway journey to Kuranda. Sit back, relax and

take in the spectacular views as the train winds its way up to the quaint village of Kuranda on this famous journey. Walk around the colourful village of Kuranda and discover the famous Kuranda Markets.

This afternoon, return on the Skyrail Rainforest Cableway, gliding silently over the rainforest as you enjoy beautiful views along the way.

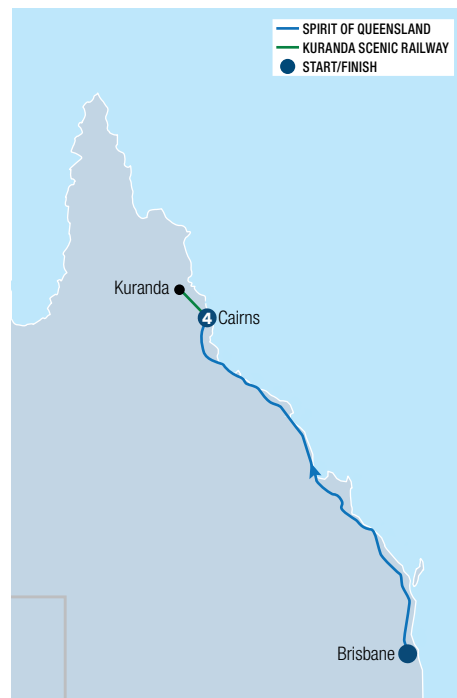
Day 5: Atherton Tableland and Paronella Park (BL)

Join a full day tour and discover the natural beauty of the Atherton Tablelands. Take a historical guided tour of Paronella Park and explore the ruins of the beautiful Spanish style castle. Visit Lake Barrine and embark on a guided walk to the Twin Kauri Pines before sitting down to a traditional Devonshire morning tea. Spend time at Millaa Millaa Falls and stop at Heales Lookout and Curtain Fig Tree.

Day 6: Cairns (B)

Your holiday concludes this morning upon check-out from the hotel.

(B = breakfast, L = lunch, D = dinner)



*** FROM PRICES ARE A GUIDE ONLY**, subject to change and availability and are in Australian Dollars. Prices for rail packages are per person per package twin share, unless otherwise specified and based on the lowest room category for travel in low season. For full terms and conditions including pricing, conditions and senior concession eligibility, refer to the Booking Conditions on the inside back cover of this brochure.



Great Barrier Reef, Tropical North Queensland



Brisbane, Queensland



Jindalba boardwalk, Daintree National Park, Tropical North Queensland

Courtesy of Tourism and Events Queensland



Kuranda Scenic Railway, Tropical North Queensland

TROPICAL RAIL ADVENTURE 8 DAYS

Day 1: Brisbane

Arrive in Brisbane and make your own way to your hotel. Stay overnight at Voco Brisbane City Centre.

Day 2: Brisbane To Cairns (BD)

After breakfast, explore the city of Brisbane at your own pace. Hop on a CityCat and cruise along the Brisbane River and take in some of Brisbane's iconic landmarks including the Story Bridge and the Kangaroo Point Cliffs. Wander through the beautiful gardens at South Bank Parklands and stop for lunch at one of the many outdoor cafés. Join the Spirit of Queensland this afternoon and travel north overnight to Cairns.

Day 3: Cairns (BL)

After breakfast, sit back and relax as you watch the ever-changing landscape as the train makes its way to Tropical North Queensland. Arrive in Cairns this afternoon and make your own way to your accommodation. Stay the next five nights at Pacific Hotel Cairns.

Day 4: Great Barrier Reef (BL)

Discover the spectacular underwater world of the Great Barrier Reef on a full day outer reef trip. Take a semi-submersible coral viewing tour and get up close and personal with the vibrant marine life. Visit the underwater observatory or just relax on the sundeck with a delicious buffet lunch.

Day 5: Kuranda (B)

This morning, experience the historic Kuranda Scenic Railway journey to Kuranda. Take in the spectacular views as you wind your way up to the quaint village of Kuranda on this famous journey. Spend time at the Rainforestation Nature Park and embark on an educational tour on a historic World War II Army Duck. Return to Cairns on the Skyrail Rainforest Cableway, gliding silently over the rainforest as you enjoy beautiful views along the way.

Day 6: Cairns (B)

Spend the day exploring Cairns at leisure. Discover rich history and Indigenous culture at one of the art galleries, take a dip in the sparkling Esplanade Lagoon or just relax by the hotel pool.

Day 7: Daintree Rainforest and Cape Tribulation (BL)

Journey north to the magnificent and untouched World Heritage-listed Daintree Rainforest, the oldest living rainforest in the world. Spot crocodiles on a Daintree River cruise, take a guided boardwalk tour through the rainforest and see where the rainforest meets the reef at Cape Tribulation beach.

Day 8: Cairns (B)

Your holiday concludes this morning upon check-out from the hotel.

(B = breakfast, L = lunch, D = dinner)

8 DAYS | BRISBANE TO CAIRNS

DEPARTS: Sun, Tue, Thu, Fri (1 Apr 25 – 27 Mar 26)⁺

Adult	From \$1969* per person twin share
Senior	From \$1915* per person twin share

HIGHLIGHTS

- Take an unforgettable journey on the Spirit of Queensland from Brisbane to Cairns
- Discover the underwater world of the Great Barrier Reef on a semi-submersible tour
- Travel past rainforest, dramatic ravines and waterfalls on the historic Kuranda Scenic Railway
- Enjoy a ride on a historic World War II Army Duck
- Embark on a guided walk through the Wet Tropics World Heritage Daintree Rainforest
- Enjoy lunch in a beautiful rainforest setting

INCLUDES

- One way overnight travel on the Spirit of Queensland from Brisbane to Cairns – RailBed
- 1 night 4½ star accommodation in Brisbane
- 5 nights 4½ star accommodation in Cairns
- Meals as specified
- Full day Great Barrier Reef Cruise
- Full day Kuranda Scenic Railway, Rainforestation and Skyrail Rainforest Cableway Tour
- Full day Daintree Rainforest and Cape Tribulation Tour

Sole use prices also available. ⁺ Blockout dates apply.



*FROM PRICES ARE A GUIDE ONLY, subject to change and availability and are in Australian Dollars. Prices for rail packages are per person per package twin share, unless otherwise specified and based on the lowest room category for travel in low season. For full terms and conditions including pricing, conditions and senior concession eligibility, refer to the Booking Conditions on the inside back cover of this brochure.



Lake McKenzie, K'gari, Queensland

Courtesy of Tourism and Events Queensland

ISLANDS OF QUEENSLAND RAIL JOURNEY 10 DAYS

Day 1: Brisbane to Hervey Bay

Depart Brisbane this morning on the Tilt Train and travel north to Maryborough West, arriving late afternoon. Transfer by RailBus connection to the Hervey Bay Transit Centre and make your own way to your accommodation at Hervey Bay. Stay overnight at Ramada Resort by Wyndham Hervey Bay.

Day 2: Hervey Bay to K'gari (B)

This morning you'll be collected and transferred to River Heads to board the ferry to World Heritage Listed K'gari, the world's largest sand island. The afternoon is free to do as much or as little as you please. Relax by the large lagoon-style pool, join one of the guided walks or indulge with a day spa treatment at the Island Spa (own expense). Stay the next two nights at Kingfisher Bay Resort.

Day 3: K'gari (BL)

Join a full day 4WD eco tour discovering all the beauty spots of the island. Guided by a local Ranger, you will walk along the boardwalk at Central Station and admire the impressive central station rainforest. Swim in the crystal blue water and white sands of Lake McKenzie.

After lunch, travel along the beach highway of 75 Mile Beach to see the Maheno shipwreck and the coloured sands of The Pinnacles.

Day 4: K'gari & Spirit of Queensland (BD)

Spend the morning at leisure before transferring by ferry to Hervey Bay to connect with the RailBus service to Maryborough West.

Board the Spirit of Queensland for the overnight journey to Townsville. Dinner will be served to you at your seat. After dinner, your seat will be transformed to a flat bed and you can settle in for the evening.

Day 5: Townsville (B)

Enjoy breakfast before arriving in Townsville. Make your own way to your hotel where you can leave your luggage before setting out to explore the surrounding area. Perhaps visit the Museum of Tropical Queensland or head to The Strand, one of Townsville's popular beaches. Stay the next two nights at Rydges Southbank Townsville.

Day 6: Magnetic Island (B)

This morning, cruise to Magnetic Island on board a high-speed catamaran. See all the major sights of beautiful Magnetic Island on a half day tour. Snorkel fringing reefs, explore many of the 23 bays and beaches and learn about the rich history of Magnetic Island as you journey around the island. Stop for lunch (own expense) before returning to Townsville in the afternoon.

Day 7: Townsville to Cairns (B)

After breakfast, make your own way to Townsville railway station and board the Spirit of Queensland for the journey to Cairns. Settle into your Economy Seat and watch the scenery pass by as you head north. On arrival in Cairns, make your own way to your hotel. Stay the next three nights at Pacific Hotel Cairns.

Day 8: Green Island (B)

This morning, take a 45-minute cruise to the tropical paradise of Green Island. Surrounded by reef filled with diverse marine life, and home to a unique rainforest environment, Green Island offers the perfect island experience. Choose to snorkel straight off the beach, take a glass bottom boat tour or sit back and relax on the white coral sand beaches.

Day 9: Cairns (B)

Today is free to explore Tropical North Queensland at your leisure. There is so much on offer but you won't want to miss the opportunity to visit the mountain village of Kuranda. Travel on the Kuranda Scenic Railway, passing through ancient Wet Tropics World Heritage rainforest of Din Din Barron Gorge National Park. Glide down the mountain on your return by Skyrail Rainforest Cableway, skimming the treetops and taking in spectacular views of Cairns below (own expense).

Day 10: Cairns (B)

As the saying goes, all good things must come to an end! Your tour concludes upon check out of your accommodation this morning. Alternatively, you may like to extend your time in the Tropical North with a stay at Palm Cove or Port Douglas.

(B = breakfast, L = lunch, D = dinner)



Kingfisher Bay Resort, Queensland



Cairns Esplanade Lagoon, Queensland



Green Island, Queensland

10 DAYS | BRISBANE TO CAIRNS

DEPARTS: Fri, Sun (4 Apr 25 – 29 Mar 26)*

Adult	From \$2319* per person twin share
Senior	From \$2239* per person twin share

HIGHLIGHTS

- Travel Queensland's coastline in comfort aboard the Tilt Train and Spirit of Queensland
- Spend three nights on K'gari, Australia's largest sand island
- Uncover K'gari's most iconic sights on a full day Beauty Spots tour
- Cruise to stunning Magnetic Island and explore the sights
- Enjoy time at leisure in tropical Cairns
- Soak up the sun on beautiful Green Island

INCLUDES

- One way travel on the Tilt Train from Brisbane to Maryborough West – Economy Seat
- Return RailBus transfers from Maryborough West to Hervey Bay
- 1 night 4½ star accommodation in Hervey Bay
- Return bus transfers from Hervey Bay accommodation to River Heads Ferry Terminal
- Return ferry transfers from River Heads to K'gari
- 2 nights 4 star accommodation on K'gari
- Full day 4WD Beauty Spots Tour
- One way travel on the Spirit of Queensland from Maryborough West to Townsville – RailBed
- 2 nights 4 star accommodation in Townsville
- Return ferry transfer from Townsville to Magnetic Island
- Magnetic Island Discovery Tour
- One way travel on the Spirit of Queensland from Townsville to Cairns – Economy Seat
- 3 nights 4½ star accommodation in Cairns
- Green Island Day Tour
- Meals as specified

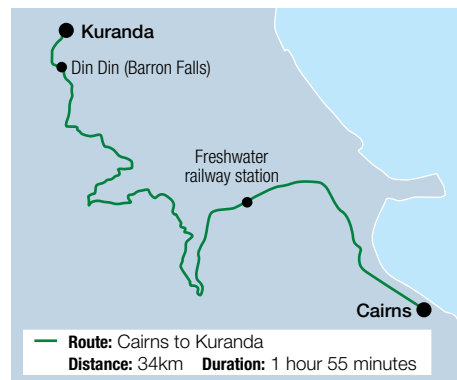
Sole use prices also available. + Blockout dates apply.



*FROM PRICES ARE A GUIDE ONLY, subject to change and availability and are in Australian Dollars. Prices for rail packages are per person per package twin share, unless otherwise specified and based on the lowest room category for travel in low season. For full terms and conditions including pricing, conditions and senior concession eligibility, refer to the Booking Conditions on the inside back cover of this brochure.



Kuranda Scenic Railway, Tropical North Queensland



Route: Cairns to Kuranda
Distance: 34km Duration: 1 hour 55 minutes

KURANDA SCENIC RAILWAY RAIL JOURNEY

Kuranda Scenic Railway is one of Australia's most scenic rail journeys, winding its way through ancient Wet Tropics World Heritage rainforest of Din Din Barron Gorge National Park to the mountain village of Kuranda. Travel in original red timber carriages and enjoy the breathtaking scenery, towering waterfalls and deep ravines as the train travels through 15 hand-made tunnels and over 55 bridges.

HERITAGE CLASS

- Original red-wooden heritage carriages
- Souvenir trip guide
- Audio commentary
- 10-minute photo stop at Din Din (Barron Falls) viewing platform
- Filtered water available in each carriage
- Toilets

GOLD CLASS

- Dedicated host
- Historic carriage with club lounge-style seating
- Welcome drink prior to departure
- Morning or afternoon refreshment with a selection of local produce
- Souvenir trip guide
- 10 minute photo stop at Din Din (Barron Falls) viewing platform
- Kuranda Scenic Railway gift pack
- Toilets



TIMETABLE

CAIRNS TO KURANDA

DEPARTS DAILY

Cairns	8:30am	9:30am [^]
Freshwater	8:55am	9:55am [^]
Arrives Kuranda	10:25am	11:25am [^]

KURANDA TO CAIRNS

DEPARTS DAILY

Kuranda	2:00pm	3:30pm [^]
Freshwater	3:32pm	5:02pm [^]
Arrives Cairns	3:55pm	5:25pm [^]

Timetable is correct at time of printing and is subject to change without notice. [^]Gold Class operates on these services. For information on the latest fares and availability, please ask your travel agent.



Historic World War II Army Duck, Tropical North Queensland

Photo courtesy of Tourism Tropical North Queensland

KURANDA SCENIC RAILWAY & SKYRAIL RAINFOREST CABLEWAY

Start your day with the famous Kuranda Scenic Railway journey to Kuranda. Sit back, relax and take in the spectacular views as you wind your way up to Kuranda. There is plenty of time in Kuranda to explore this quaint village and visit the Heritage Markets. Board the Skyrail Rainforest Cableway for the return journey to Cairns, glide silently over and through the rainforest, enjoying beautiful views along the way.

KURANDA SCENIC RAILWAY, RAINFORESTATION & SKYRAIL RAINFOREST CABLEWAY

Combine all the experiences of the Kuranda Scenic Railway and Skyrail Rainforest Cableway with a visit to Rainforestation Nature Park. Take the opportunity to ride the amphibious Army Duck and enjoy the Wildlife Park.

Includes:

- One way Skyrail Rainforest Cableway
- One way Kuranda Scenic Railway
- Admission to Rainforestation (Kuranda Scenic Railway, Rainforestation & Skyrail Rainforest Cableway option)
- Return transfers from selected Cairns locations

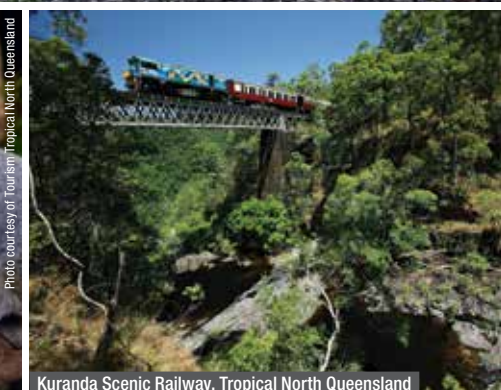
Operator: Down Under Tours

Duration: 8 hours

Departs: From Cairns
Kuranda Scenic Railway & Skyrail Rainforest Cableway: Daily at 8:15am
Kuranda Scenic Railway, Rainforestation & Skyrail Rainforest Cableway: Mon, Tue, Thu, Fri, Sat, Sun at 8:15am



Rainforestation Nature Park, Tropical North Queensland



Kuranda Scenic Railway, Tropical North Queensland

	Adult/Senior
Kuranda Scenic Rail & Skyrail	\$209*
Kuranda Scenic Rail, Rainforestation & Skyrail	\$288*

* FROM PRICES ARE A GUIDE ONLY, subject to change and availability and are in Australian Dollars. Prices for tours are per person, unless otherwise specified. All prices based on travel in low season. For full terms and conditions including pricing, conditions and senior concession eligibility, refer to the Booking Conditions on the inside back cover of this brochure.

EXTEND YOUR STAY IN TROPICAL NORTH QUEENSLAND



Low Isles, Tropical North Queensland

PORT DOUGLAS ESCAPE

Nestled between Cairns and the Daintree, Port Douglas is a tropical paradise and home to famous Four Mile Beach, with golden sand stretching as far as the eye can see, crystal-clear water lapping the shoreline and palm trees swaying in the breeze.

Offering resort-style holiday apartment style accommodation, Silkari Lagoons Port Douglas is just a short stroll from the beach. The large lagoon pools are ideal for cooling off after a day of sightseeing.

Set sail to idyllic Low Isles aboard the beautiful sailing catamaran, Wavedancer, for a perfect day of swimming and snorkelling.

This four day escape is the perfect way to extend your Tropical North Queensland holiday.

INCLUDES

- 3 nights accommodation in a One Bedroom Executive apartment at Silkari Lagoons Port Douglas
- Wavedancer Low Isles Day Cruise
 - 4 hours at Low Isles lagoon
 - Use of snorkelling equipment and guided snorkel tour
 - Glass bottom boat coral viewing
 - Marine biologist guided snorkel tour and island walk
- Tropical buffet lunch



Silkari Lagoons Port Douglas, Queensland



Four Mile Beach, Port Douglas, Queensland

From **\$545**** per person twin share

^Price based on 3 night package. Ask your travel agent for prices for other room types.



Palm Cove, Queensland

PALM COVE GETAWAY

If complete relaxation is on the menu, why not stay three nights in the glamorous beach village of Palm Cove. With a gorgeous palm-fringed beach and an esplanade lined with 500-year-old melaleuca trees, it's the ideal destination to indulge body, mind and spirit.

Relax and unwind at Drift Palm Cove, situated in the heart of Palm Cove. Cool off in the crystal blue water of the lagoon style pool or soak up the sun on the poolside deck. Explore the village of Palm Cove, take in some shopping, or relax over a long lunch at one of the restaurants situated along the esplanade.

Venture to the Atherton Tablelands for a delicious, gourmet food and wine tasting tour. Visit a tea plantation and sip teas paired with Gallo cheeses. Lunch at the Australian Platypus Park with crocodile, kangaroo, smoked fish and chicken followed by a tasting of Murdering Point Wines. Taste chocolate at a working dairy farm and sample seasonal, tropical fruits and local peanuts and macadamia nuts at a farm produce store. Stop at Mount Uncle Distillery for a tasting before finishing at either Skybury or Jaques Coffee Plantation for coffee and scones with jam and cream.

Extend your stay in the Tropical North with this four day getaway.

INCLUDES

- 3 nights accommodation in a One Bedroom apartment at Drift Palm Cove
- Full day Brett's Outback Tasting Adventures Tour
 - Full tropical breakfast
 - Gourmet lunch
 - Return transfers from Drift Palm Cove



Drift Palm Cove, Queensland



Brett's Outback Tasting Adventure, Queensland

From **\$639**** per person twin share

^Price based on 3 night package. Ask your travel agent for prices for other room types.

***FROM PRICES ARE A GUIDE ONLY**, subject to change and availability and are in Australian Dollars. Prices are per person twin share, unless otherwise specified and based on the lowest room category and travel in low season. For full terms and conditions, refer to the Booking Conditions on the inside back cover of this brochure.



Winton, Queensland

Courtesy of Tourism and Events Queensland

OUTBACK QUEENSLAND

Outback Queensland's central west is the birthplace of Qantas, Waltzing Matilda and Australia's Labor Party. This is a region of vast landscapes, endless blue skies, country pubs and outback characters just waiting to have a yarn. At the core of the central west is its pioneering history.

In the legendary town of Longreach, wander through the innovative museums, attractions and exhibitions at The Australian Stockman's Hall of Fame and Qantas Founders Museum. Witness a stunning outback sunset as you cruise along the Thomson River and take a ride on a restored stagecoach.

Winton is best known as the place where Banjo Patterson penned Waltzing Matilda in 1895 and where Qantas was founded in 1920. Visit the Waltzing Matilda Centre or enjoy a meal at the iconic Tattersall's Hotel.

A short distance from Winton, stand where dinosaurs once roamed the earth at Lark Quarry Conservation Park. Take in the rugged landscape of mesas, gullies and broken escarpments formed over millions of year.



Qantas Founders Museum, Longreach, Queensland

Courtesy of Tourism and Events Queensland



Winton, Queensland

Courtesy of Tourism and Events Queensland



Cobb & Co Stagecoach Experience, Longreach, Queensland

Courtesy of Tourism and Events Queensland



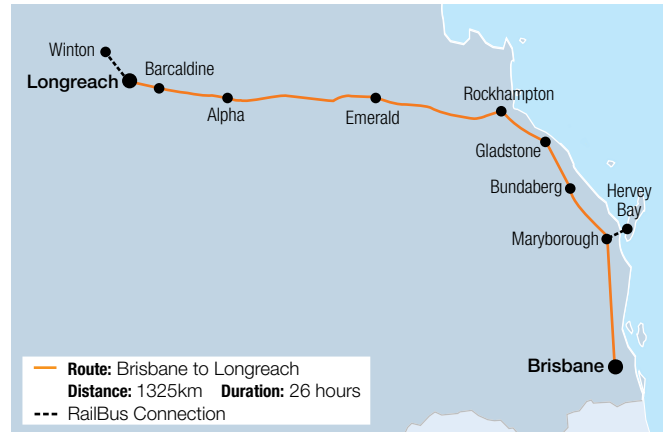
Spirit of the Outback



Sleeper by night



Sleeper by day



SPIRIT OF THE OUTBACK RAIL JOURNEY

The journey between Brisbane and Longreach offers a unique insight into the history and culture of Australia. Wonder at the ever-changing landscape, as the train makes its way into the very heart of the Queensland Outback.

Indulge in a private Single or Twin Sleeper, providing a comfortable seat during the day converting to a bed at night. Immerse yourself in the experience with exclusive access to the restaurant, where delicious meals are prepared by the onboard chef. Or choose to travel in an Economy Seat, with your choice of meals, light refreshments and drinks available to purchase throughout the journey.

Watch the Outback come to life as the Spirit of the Outback travels through spectacular scenery and the remote towns along the way.

FEATURES INCLUDE

- Servery to purchase meals and refreshments
- Drinking fountains
- Large panoramic windows
- Shower and toilet facilities

ECONOMY SEAT

- Comfortable reclinable seat with footrest, tray table and reading light
- One item of checked-in luggage and one carry-on item

SLEEPER

- Private cabin with comfortable seat by day
- Converts to a lie-flat bed at night with linen, pillow, towel and amenities pack
- All-inclusive meals served in the Tuckerbox Restaurant
- Shearers Rest Lounge
- Cabins include a wash basin with mirror and small wardrobe
- Two items of checked-in luggage and one carry-on item

TIMETABLE

BRISBANE TO LONGREACH (OVERNIGHT)

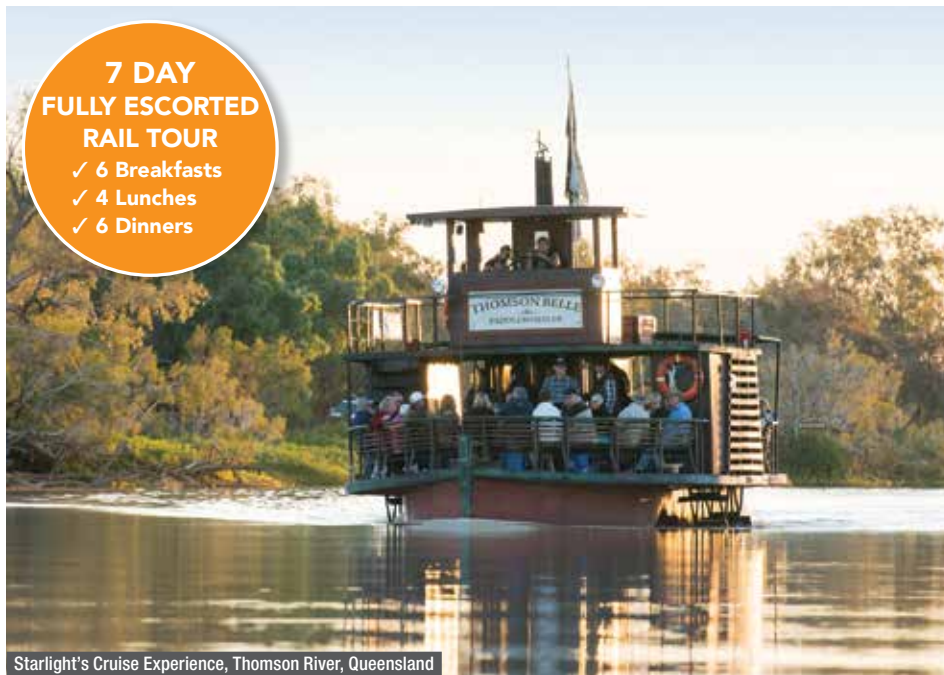
DEPARTS	TUE	SAT
Brisbane	6:10pm	2:40pm
Bundaberg	12:01am	8:58pm
Rockhampton	5:04am	2:00am
Arrive Longreach	7:50pm	4:30pm

LONGREACH TO BRISBANE (OVERNIGHT)

DEPARTS	MON, THU
Longreach	10:00am
Rockhampton	1:25am
Bundaberg	5:27am
Arrive Brisbane	11:50am

Timetable is correct at time of printing and is subject to change without notice. The RailBus connection service provides a transfer from Longreach railway station to Winton, your gateway to the prehistoric dinosaurs at Lark Quarry. The RailBus connection takes two hours and departs Winton Monday and Thursday morning three hours before the departure of the Spirit of the Outback, to ensure there is time for check in at Longreach. For information on the latest fares and availability, please ask your travel agent.

OUTBACK QUEENSLAND



**7 DAY
FULLY ESCORTED
RAIL TOUR**
✓ 6 Breakfasts
✓ 4 Lunches
✓ 6 Dinners

Starlight's Cruise Experience, Thomson River, Queensland



Australian Stockman's Hall of Fame & Outback Heritage Centre, Longreach, Queensland



Nogo Station, Longreach, Queensland

ULTIMATE OUTBACK QUEENSLAND ADVENTURE

7 DAYS

Venture into the heart of Queensland's outback on our fully escorted Ultimate Outback Queensland Adventure. Explore Australia's rich heritage and gain genuine insights into pioneer life on this fabulous outback quest. Meet fascinating local characters who will captivate and charm you with their stories of life in the outback.

Our experienced tour guide will be with you every step of the way so you can relax and fully immerse yourself in this incredible outback adventure.

Day 1: Brisbane to Longreach (D)

Meet your tour leader at Brisbane Domestic Airport for your flight to Longreach. On arrival in Longreach, transfer to your accommodation and get ready for tonight's adventure.

Enjoy a welcome dinner at Harry's Restaurant before experiencing the spectacular light and sound show at the Qantas Founders Museum. Stay the next five nights at The Staging Post, Longreach.

Day 2: Longreach (BLD)

Start the day with the Cobb and Co Stagecoach Experience. Hold onto your hat for the only stagecoach gallop in Australia! This afternoon, tour the Longreach School of Distance Education before heading to the banks of the Thomson River for Starlight's Cruise Experience. Enjoy a hearty stockman's dinner around the campfire with bush poetry.

Day 3: Longreach (BLD)

Spend the day experiencing the real heart of outback life at Kinnon's historic Nogo Station. Marvel at the merino story in the historic shearing sheds. Experience the incredible station safari in an open-top, double-decker bus. Visit Captain Starlight's stockyards and enjoy a traditional saddlebag lunch under the gum trees.

This afternoon, visit the Qantas Founders Museum. Explore the museum's artefact displays and learn about the history of Qantas. The Airpark Tour will take you behind the scenes of the DC-3, Boeing 747, Boeing 707 and Super Constellation. After the tour you might like to take a fantastic 10-minute helicopter flight over the Thomson River (own expense). Return to your accommodation in time to freshen up before your Stonegrill® dining experience at The Welcome Home.

Day 4: Winton (BLD)

An early start this morning for a full day tour to Winton. Visit the Australian Age of Dinosaurs museum and Dinosaur Canyon and the Waltzing Matilda Centre. Enjoy lunch at the historic North Gregory Hotel and take a stroll down the main street before returning to Longreach. Tonight, you will be treated to a Country Classic Dining Experience.

Day 5: Longreach (BD)

Today, visit the iconic Australian Stockman's Hall of Fame and explore the five galleries of the museum. This afternoon, step back in time and waltz to classic tunes played on a vintage gramophone. Return to your accommodation and enjoy dinner this evening at The Branch Café.

Day 6: Longreach to Brisbane (BLD)

After breakfast, transfer to Longreach railway station to board the Spirit of the Outback for your overnight journey back to Brisbane. Wonder at the ever-changing landscape as the train makes its way from the very heart of the Queensland Outback. Overnight on board the Spirit of the Outback.

Day 7: Arrive Brisbane (B)

Your Ultimate Outback Adventure comes to an end with your arrival into Brisbane.

(B = breakfast, L = lunch, D = dinner)

7 DAYS | BRISBANE TO BRISBANE

DEPARTS: 28 May, 30 Jul, 3 Sep 25

Adult **From \$5149***
per person twin share

Senior **From \$5079***
per person twin share

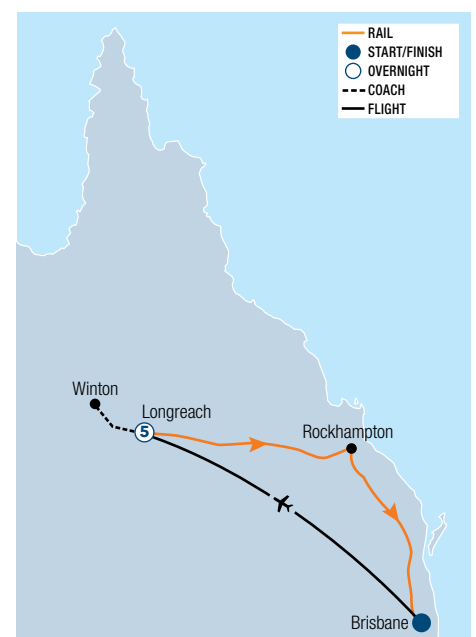
HIGHLIGHTS

- Journey on the legendary Spirit of the Outback from Longreach to Brisbane
- Board the only paddlewheeler west of the Great Divide and take in a spectacular outback sunset
- Explore the iconic Australian Stockman's Hall of Fame
- Take in the spectacular Luminescent Longreach Light & Sound Show at the Qantas Founders Museum
- Enjoy an afternoon of dancing to classic tunes played on a gramophone
- Experienced tour guide for the duration of the tour

INCLUDES

- One way economy class airfare from Brisbane to Longreach
- One way overnight travel on the Spirit of the Outback from Longreach to Brisbane – Sleeper
- Services of an experienced tour guide
- 5 nights 4 star accommodation in Longreach
- Meals as specified
- Luminescent Longreach Light & Sound Show
- Cobb and Co Stagecoach Experience
- Admission to Longreach School of Distance Education
- Starlight's Cruise Experience with Campfire Dinner
- Starlight's Spectacular Sound & Light Picture show
- Nogo Station Experience with Kinnon host and Station safari
- Admission to Qantas Founders Museum and Airpark Tour
- Australian Age of Dinosaurs Tour including Dinosaur Canyon
- Admission to the Waltzing Matilda Centre
- Winton Discovery Town Tour
- Admission to Australian Stockman's Hall of Fame
- All coach transfers in Longreach

Sole use prices also available. A minimum of 15 passengers is required for this tour to operate.



* FROM PRICES ARE A GUIDE ONLY, subject to change and availability and are in Australian Dollars. Prices for rail packages are per person per package twin share, unless otherwise specified and based on the lowest room category for travel in low season. For full terms and conditions including pricing, conditions and senior concession eligibility, refer to the Booking Conditions on the inside back cover of this brochure.



Outback Aussie Tours, Longreach, Queensland

Courtesy of Tourism and Events Queensland

OUTBACK WHISTLE STOP LONGREACH 6 DAYS

Day 1: Longreach (D)

Arrive in Longreach, the heartland of Queensland's Outback. Meet your Savannah Guide and be transferred to your hotel. Tonight, join your guide for a welcome dinner at the Woolshed Restaurant. Stay the next four nights at Longreach Tourist Park, Longreach.

Day 2: Longreach (BLD)

After breakfast, visit historic Rosebank Station and enjoy a homestead morning tea before boarding the Heritage Rail Motor to Ilfracombe. Visit the Wellshot centre, Machinery Mile and stop for lunch at the famous Wellshot Hotel. Transfer to the Qantas Founders Museum and wander through the interactive exhibits before joining a guided Airpark Tour. This evening, marvel at the entertaining and informative Luminescent Longreach Sound & Light Show, which brings the 100-year-story of Qantas to life.

Day 3: Longreach (BLD)

This morning, discover the inspiring stories of the pioneering heroes at the Australian Stockman's Hall of Fame. Watch the Stockman's Live Show and witness

amazing horsemanship and the action of a live muster. Late afternoon, join the Drover's Sunset Cruise on the beautiful Thomson River. Enjoy on-board nibbles followed by a two-course table service dinner under the stars at Smithy's Outback Dinner & Show.

Day 4: Longreach (BLD)

Today, board the Outback Rail Adventure, a Heritage Rail Motor journey along the Great Darr River Run and discover the local wildlife as you travel through the changing landscape. This afternoon, join the Silver-Tails Rail Sunset tour and watch the sun set over the Open Downs and Red Mulga Country as you enjoy a selection of canapes on board the Heritage Rail Motor. Transfer to Longreach for a farewell dinner.

Day 5: Longreach to Brisbane (BLD)

After breakfast, transfer to the railway station for the return rail journey. Overnight on the Spirit of the Outback.

Day 6: Brisbane (B)

Your holiday concludes upon arrival into Brisbane.

(B = breakfast, L = lunch, D = dinner)

6 DAYS LONGREACH TO BRISBANE

DEPARTS: 22 Jun, 27 Jul, 21 Sep, 12 Oct 25

Adult **From \$2825***
per person twin share

Senior **From \$2759***
per person twin share

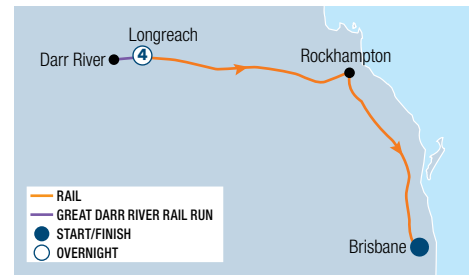
HIGHLIGHTS

- Journey along the Great Darr River Run on the Heritage Rail Motor
- Take in the bygone days at the Australian Stockman's Hall of Fame
- Learn about the hat collection at the Historic Wellshot Hotel

INCLUDES

- One way overnight travel on the Spirit of the Outback from Longreach to Brisbane – Sleeper
- 4 nights ensuite accommodation in Longreach
- Meals as specified
- Tours and admissions as per itinerary
- Travel by luxury coach
- Savannah Guide Driver and Host
- All coach transfers in Longreach

Sole use prices also available.



Australian Age of Dinosaurs, Winton, Queensland

Courtesy of Tourism and Events Queensland

WINTON EXPLORER 7 DAYS

Day 1: Brisbane to Longreach (D)

You'll be captivated by the ever-changing landscapes on your journey between Brisbane and Longreach. Overnight on board the Spirit of the Outback.

Day 2: Longreach to Winton (BLD)

Arrive into Longreach in the afternoon and travel by coach to your accommodation in Winton. Stay the next four nights at the Winton Outback Motel.

Day 3: Winton (BLD)

Visit Carisbrooke Station and discover the hidden treasures of the Merton Gorge and Lookout. Continue your journey through Winton's mesa country to the Dinosaur Stampede where 3300 dinosaur footprints were preserved 95 million years ago.

Day 4: Winton (B)

Today visit the Australian Age of Dinosaurs and see the largest collection of Australian dinosaur bones in the world. Check out how the fossils are looked after in the Fossil Preparation Laboratory, then take a trip to Dinosaur Canyon, where you can walk through four exhibits with life-size dinosaur replicas. Travel to

Bladensburg National Park which is steeped in history but also has the rugged beauty of rock formations and a diverse ecosystem. Visit the old homestead and shearing shed which is one of the original sheep stations in the Winton area dating back to the 1870's.

Day 5: Winton (B)

Spend the morning exploring the Waltzing Matilda Centre. This museum is a fabulous celebration of our unofficial national song and the history of Winton. This afternoon, take a tour to Rangelands Station and walk through the Rangelands Rifts. Take in the spectacular views from the sunset lookout and enjoy a glass of wine and nibbles as you watch the sun set.

Day 6: Longreach to Brisbane (BLD)

Transfer by coach to Longreach for the journey to Brisbane. Overnight on board the Spirit of the Outback.

Day 7: Brisbane (B)

Arrive in Brisbane where your tour concludes.

(B = breakfast, L = lunch, D = dinner)

7 DAYS | BRISBANE TO BRISBANE

DEPARTS: Saturdays (29 Mar – 2 May, 17 May – 27 Jun, 5 Jul – 26 Sep, 4 – 26 Oct 25)

Adult **From \$2339***
per person twin share

Senior **From \$2185***
per person twin share

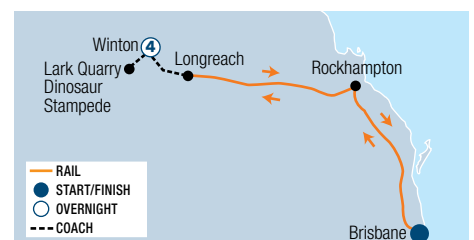
HIGHLIGHTS

- See the Dinosaur Stampede at Lark Quarry Conservation Park
- Take in the natural beauty of Carisbrooke Station
- Tour the fossil preparation laboratory at the Australian Age of Dinosaurs
- Visit the old Homestead at Bladensburg National Park

INCLUDES

- Return overnight travel on the Spirit of the Outback from Brisbane to Longreach – Sleeper
- 4 nights 4 star accommodation in Winton
- Meals as specified
- Tours and admissions as per itinerary
- Return RailBus connection transfers from Longreach railway station to Winton
- Savannah Guides Enterprise and accredited guide

Sole use prices also available.



*FROM PRICES ARE A GUIDE ONLY, subject to change and availability and are in Australian Dollars. Prices for rail packages are per person per package twin share, unless otherwise specified and based on the lowest room category for travel in low season. For full terms and conditions including pricing, conditions and senior concession eligibility, refer to the Booking Conditions on the inside back cover of this brochure.

OUTBACK QUEENSLAND



Cobb & Co Stagecoach Experience, Longreach, Queensland



Starlight's Cruise Experience, Longreach, Queensland



Starlight's Cruise Experience, Thomson River, Queensland

UNLEASH LONGREACH 8 DAYS

Day 1: Brisbane to Longreach (D)

Your adventure begins as you board the Spirit of the Outback in Brisbane for the rail journey to Longreach. Enjoy dinner in the Tuckerbox Restaurant before retiring to your private cabin for the evening. Overnight on board the Spirit of the Outback.

Day 2: Longreach (BL)

Enjoy a hearty breakfast in the Tuckerbox Restaurant this morning, as your journey to Longreach continues. On arrival in Longreach, you'll be met and transferred to your accommodation. Stay the next five nights at The Staging Post, Longreach.

Day 3: Longreach (BLD)

Take your seat for the ride of your life at the only place in the world where you can experience what it's like to gallop in a Cobb & Co stagecoach. Enjoy morning tea before watching a classic Australian movie followed by the Old Time Tent Show. This afternoon, travel to the banks of the Thomson River and board a historic paddlewheeler for a sunset cruise. Afterwards, enjoy a hearty stockman's dinner around the campfire with bush entertainment and the authentic Starlight's Spectacular Sound and Light Picture Show.

Day 4: Longreach (BLD)

Enjoy a country buffet breakfast at The Welcome Home before travelling to historic Nogo Station – a working sheep and cattle station. Meet the merinos and hear the Merino story in the historic woolsheds. Experience a station 'water-run' in an open-top, double-decker bus. See Captain Starlight's stockyards and enjoy a traditional saddlebag lunch under the gum trees.

Transfer to the Qantas Founders Museum and join a guided tour of the 747 plane and Super Constellation. After the guided tour spend time discovering the many exhibits and learn about the pioneers of flight. This evening, enjoy the Stonegrill® Dining Experience at The Welcome Home.

Day 5: Longreach to Winton (BLD)

An early start this morning for a full day tour of Winton. Visit the Australian Age of Dinosaurs Museum. Take an interpretive tour of the laboratory, the March of the Titanosaurs display and Dinosaur Canyon.

Enjoy lunch at the historic North Gregory Hotel and take a stroll down the main street before visiting the Waltzing Matilda Centre. Travel back to Longreach in the late afternoon.

Day 6: Longreach (B)

Today, visit the iconic Australian Stockman's Hall of Fame and explore the five galleries of the museum. Hear first-hand the recollections from the extensive oral history collection, transcribed diary entries from those that cut a living from a harsh environment.

Day 7: Longreach to Brisbane (BLD)

Transfer to the railway station for the journey back to Brisbane. Overnight on board the Spirit of the Outback.

Day 8: Brisbane (B)

Your holiday concludes upon arrival into Brisbane mid morning.

(B = breakfast, L = lunch, D = dinner)

8 DAYS | BRISBANE TO BRISBANE

DEPARTS: 22, 29 Apr, 10 Jun, 15 Jul, 16, 30 Sep, 14 Oct 25

Adult **From \$4855***
per person twin share

Senior **From \$4719***
per person twin share

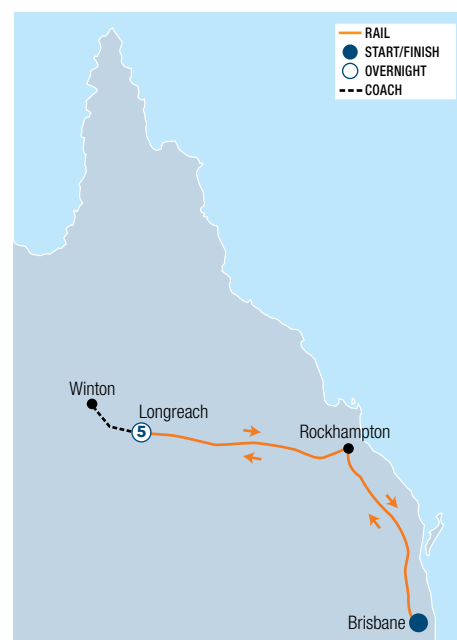
HIGHLIGHTS

- Take a stagecoach ride on the old Longreach to Windorah mail route
- Board a historic paddlewheeler for a sunset cruise on the Thomson River
- Meet the shearer at historic Nogo Station
- Follow in the footsteps of dinosaurs as you walk through Dinosaur Canyon
- Be charmed by local bush theatre at the Old Time Tent Show
- Visit the iconic Australian Stockman's Hall of Fame
- Full day tour to the historic town of Winton

INCLUDES

- Return overnight travel on the Spirit of the Outback from Brisbane to Longreach – Sleeper
- 5 nights 4 star accommodation in Longreach
- Meals as specified
- Nogo Station Experience
- Admission to Qantas Founders Museum and Airpark Tour
- Cobb & Co Stagecoach Experience
- Starlight's Cruise Experience with 2 course campfire dinner
- Starlight's Spectacular Sound & Light Picture Show
- Australian Age of Dinosaurs Tour, including Dinosaur Canyon
- Winton Town Tour
- Admission to Waltzing Matilda Centre
- Admission to Australian Stockman's Hall of Fame
- All coach transfers in Longreach

Sole use prices also available. Ask your travel agent for other available departure dates.



* FROM PRICES ARE A GUIDE ONLY, subject to change and availability and are in Australian Dollars. Prices for rail packages are per person per package twin share, unless otherwise specified and based on the lowest room category for travel in low season. For full terms and conditions including pricing, conditions and senior concession eligibility, refer to the Booking Conditions on the inside back cover of this brochure.



Drover's Sunset Cruise, Outback Aussie Tours, Longreach, Queensland



Outback Aussie Tours, Longreach, Queensland



Australian Age of Dinosaurs, Winton, Queensland

8 DAYS | BRISBANE TO BRISBANE

DEPARTS: 15, 22, 29 Apr, 24 Jun, 1, 22 Jul, 12 Aug, 16 Sep, 7 Oct 25

Adult	From \$4555* per person twin share
Senior	From \$4415* per person twin share

HIGHLIGHTS

- Go behind the scenes at the Qantas Founders Museum and join the guided Airpark tour
- Cruise the majestic Thomson River
- Enjoy an exclusive dinner at Camden Park Station
- Explore the fascinating themed galleries at the Australian Stockman's Hall of Fame
- Watch the exciting Stockman's Live Show and take in the action of a live muster
- Experience a sunset dinner at the Australian Age of Dinosaurs

INCLUDES

- Return overnight travel on the Spirit of the Outback from Brisbane to Longreach – Sleeper
- 3 nights 4 star accommodation in Longreach
- 2 nights 4 star accommodation in Winton
- Meals as specified
- Admission to Qantas Founders Museum and Airpark Tour
- Camden Park Station Sunset Tour
- Great Darr River Rail Tour
- Admission to Waltzing Matilda Centre
- Australian Age of Dinosaurs: Sunset Tour and exclusive BBQ Dinner
- Admission to the Australian Stockman's Hall of Fame & Outback Stockman's show
- Drover's Sunset Cruise
- Travel by quality 4WD coach
- Savannah Guides Master Operator driver and host
- All coach transfers

Sole use prices also available.

LEGENDARY LONGREACH & WINTON 8 DAYS

Day 1: Brisbane to Longreach (D)

Board the Spirit of the Outback for your overnight journey to Longreach. Wonder at the ever-changing landscape as the train makes its way into the heart of the Queensland Outback. Follow in the footsteps of the early pioneers and get ready for the holiday of a lifetime.

Day 2: Longreach (BL)

On arrival at Longreach railway station, you'll be met by your tour guide and transferred to your hotel. Stay the next two nights at Longreach Motor Inn.

Day 3: Longreach (BLD)

After breakfast, visit historic Rosebank Station and enjoy a relaxed homestead morning tea. Transfer to the Qantas Founders Museum and spend time exploring the interpretive and interactive exhibits before joining a guided Airpark Tour featuring the Boeing 707, DC-3, Super Constellation and the Boeing 747. Late afternoon, travel to Camden Park Station for a dose of outback hospitality by fifth-generation graziers, the Walker family. Enjoy sunset drinks and an exclusive dinner.

Day 4: Longreach to Winton (BLD)

This morning, join the Great Darr River Rail tour and watch out for wildlife on the side of the track as you travel through scrub and grasslands on a Heritage Rail Motor. Enjoy lunch at Darr River Downs Station before travelling by coach to Winton. After dinner at the North Gregory Hotel, enjoy a classic movie at the Royal Open-Air Theatre. Stay the next two nights in Winton.

Day 5: Winton (BLD)

Today, take a town tour and visit the Waltzing Matilda Centre to learn the story behind Australia's unofficial anthem. Tour the Australian Age of Dinosaurs before a very special sunset barbecue.

Day 6: Longreach (BLD)

Return to Longreach this morning and visit the Australian Stockman's Hall of Fame. Explore the fascinating themed galleries, a tribute to the pioneers and indigenous people of the Australian Outback. Watch the Stockman's Live Show and witness amazing horsemanship.

Late afternoon, transfer to the Thomson River and board the Longreach Explorer for the award-winning Drover's Sunset Cruise. Relax on the top deck with 360-degree views of this majestic outback waterhole and enjoy onboard nibbles followed by a two-course table service dinner under the stars at Smithy's Outback Dinner & Show. Overnight at Longreach Motor Inn.

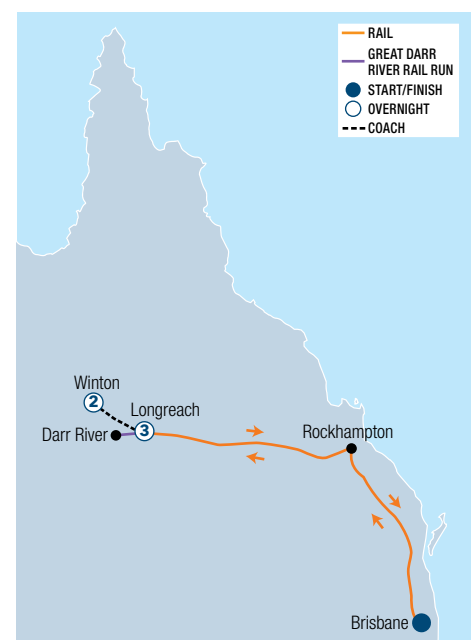
Day 7: Longreach to Brisbane (BLD)

Transfer to Longreach railway station to board the Spirit of the Outback for your overnight journey. There'll be plenty of time to reminisce about your outback experience as the train makes its way along the scenic route back to Brisbane.

Day 8: Brisbane (B)

This morning breakfast is served on board before arriving in Brisbane, where your tour concludes.

(B = breakfast, L = lunch, D = dinner)



*FROM PRICES ARE A GUIDE ONLY, subject to change and availability and are in Australian Dollars. Prices for rail packages are per person per package twin share, unless otherwise specified and based on the lowest room category for travel in low season. For full terms and conditions including pricing, conditions and senior concession eligibility, refer to the Booking Conditions on the inside back cover of this brochure.



Cobbold Gorge, Forsyth, Queensland

Courtesy of Tourism and Events Queensland

GULF SAVANNAH

Venture deep into Gulf Savannah Country and discover where the Outback meets the sea. Rugged by nature, the Gulf Savannah is home to great fishing, pioneer heritage and unique landscapes.

Friendly characters and historic towns showcase the Gulf Savannah's rich pioneering heritage. Established as a Gold Rush port, Normanton is the Gulf Savannah's largest town. Stop by the Victorian era Normanton railway station or get to know the locals at the 'Purple Pub'. Visit the historic gold mining townships of Croydon and Forsyth and wander through the many heritage buildings.

It's also blessed with awe-inspiring geological wonders. Cruise through the breathtaking sandstone escarpments of Cobbold Gorge. Take a dip in the waters of Copperfield Gorge, with its sheer basalt cliffs. Visit Undara Volcanic National Park and marvel at the world's oldest and longest volcanic lava tubes, formed 190,000 years ago.

Experience the amazing landscape of the Gulf Savannah on two incredible rail journeys: the Gullfander and Savannahlander.



Karumba, Queensland



Undara Experience, Undara Volcanic National Park, Queensland



Les Wilson Barramundi Discovery Centre, Karumba, Queensland

Courtesy of Tourism and Events Queensland

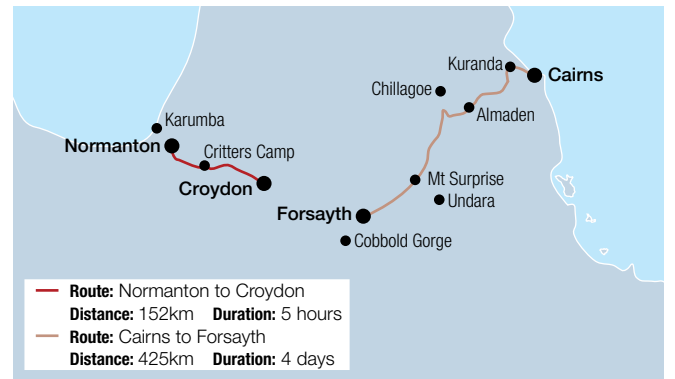
Courtesy of Tourism and Events Queensland



Gulflander, Queensland



Gulflander, Queensland



GULFLANDER RAIL JOURNEY

Discover the incredible Gulf Savannah country aboard the Gulflander, a legendary rail journey unlike any other. The Heritage-listed Normanton to Croydon line is an icon of the Outback, an isolated railway line affectionately said to go from ‘nowhere to nowhere’ and to this day, retains its patented steel sleepers, laid between 1888 and 1891.

FEATURES INCLUDE

- Informative Savannah Guide driver trip commentary
- Morning tea refreshment at Blackbull Siding
- Hear stories about the interesting station names along the way including Critters Camp
- Stop to deliver the mail at Haydon Mail stop (subject to postal activity)
- Souvenir trip guide
- Drinking water and toilet facilities

SAVANNAHLANDER RAIL JOURNEY

Experience the heritage and rugged natural beauty of the Savannah Country as you travel from Cairns to Forsyth on the Savannahlander. Departing once a week from March to November, The Savannahlander stops overnight at three different outback towns – Almaden, Forsyth and Mount Surprise.

Ask your travel agent for timetables and prices.

TIMETABLE

NORMANTON TO CROYDON

DEPARTS	WED
Normanton	8:30am
Arrive Croydon	1:30pm

CROYDON TO NORMANTON

DEPARTS	THU
Croydon	8:30am
Arrive Normanton	1:30pm

Timetable is correct at time of printing and is subject to change without notice. For information on the latest fares and availability, please ask your travel agent.



Normanton Station, Queensland

GULF SAVANNAH



Undara Experience, Undara Volcanic National Park, Queensland

Courtesy of Tourism and Events Queensland

GULF SAVANNAH EXPERIENCE 7 DAYS

Day 1: Cairns

Arrive in Cairns and make your own way to your accommodation. If time permits, take a self-guided tour around Cairns. Stroll along the Esplanade, soak up the outdoor lifestyle at the many restaurants and cafés or spend time exploring the Cairns Aquarium (own expense). Overnight at Cairns Plaza Hotel.

Day 2: Cairns to Karumba (B)

An early start this morning for a full day of travelling by coach to Karumba. Travel over 700 kilometres, as you journey along the Savannah Way. Heading west from Cairns, wind your way up the Kuranda Range onto the Atherton Tablelands and then onto remote, untamed reaches of the Outback. Pass through the historic outback towns of Mount Surprise and Croydon before arriving in Karumba late afternoon. Stay the next two nights at Ash's Holiday Units, Karumba.

Day 3: Karumba (B)

The town of Karumba is a popular Barramundi fishing port on the Gulf of Carpentaria. This morning, head to the Les Wilson Barramundi Discovery Centre and join a behind the scenes tour. Get to see the hatchery operations and learn about the species of the Southern Gulf strain of Barramundi. Spend the afternoon at leisure. Choose to take a cruise through the Port of Karumba estuary or try your luck with a fishing tour (all own expense). Finish the day with a sunset cruise on the Norman River (own expense).

Day 4: Karumba to Forsyth (BLD)

After breakfast, transfer to Normanton railway station for your journey to Croydon onboard the Gulflander. Take in the diverse Gulf landscape and its rich history as you travel along the Heritage-listed Normanton to Croydon line. Make a stop at Blackbull Siding for morning tea. Arrive in the historic gold mining town of Croydon and enjoy lunch at the Croydon Hotel before transferring to Forsyth.

Enjoy dinner at the Goldfields Hotel followed by a one hour Forsyth By Night tour. Learn about the history of how Forsyth was built during the gold rush and how the rail line development impacted on the town. Stay the next two nights at Finnigan's Rest, Forsyth.

Day 5: Cobbold Gorge (BLD)

Transfer from Forsyth to Cobbold Gorge. After lunch, gain an informative insight in to the geology of the rugged sandstone formations before taking an interpretive walk to the escarpment. Cross over Australia's first fully glass bridge and take in the view of the gorge's impressive sandstone walls.

Then explore Cobbold Gorge as you glide through the spectacular sculpted gorge walls on a boat cruise. This gorge is vastly different from others owing to its extreme narrowness, measuring a mere two metres width in places and featuring spectacular 30 metre cliffs on either side. After the cruise, return to Forsyth and spend the remainder of the afternoon at leisure.

Day 6: Forsyth to Undara (BLD)

Depart on the Savannahlander from Forsyth. The train travels through the Einasleigh Ranges before arriving at Mount Surprise. Arrive at Mount Surprise and join an afternoon tour of the Undara Lava Tubes. Be guided through the mesmerising lava tubes, created some 190,000 years ago.

Savour rustic Australian flavours as you relax over dinner. After dinner, take part in a truly authentic outback experience as you gather around the campfire and listen to live entertainment. Overnight in a Homestead room at Discovery Resorts – Undara.

Day 7: Undara to Cairns (BL)

This morning rejoin the Savannahlander. Along the way, stop at Bullock Creek Café for a morning tea break and then onto Almaden in time for lunch.

After lunch, the Savannahlander will travel through World Heritage-listed rainforest, stopping briefly at Kuranda and Din Din (Barron Falls) before travelling down the range to Cairns where your tour concludes.

(B = breakfast, L = lunch, D = dinner)



Gulflander, Queensland



The Anchorage Bar & Café, Karumba, Queensland



Cobbold Gorge Tours, Forsyth, Queensland

7 DAYS | CAIRNS TO CAIRNS

DEPARTS: 13, 20[^] Apr, 4, 25 May, 1, 15 Jun, 13 Jul, 10, 24 Aug, 7, 14, 21 Sep, 5, 12 Oct 25

Adult	From \$2689* per person twin share
Senior	From \$2635* per person twin share

HIGHLIGHTS

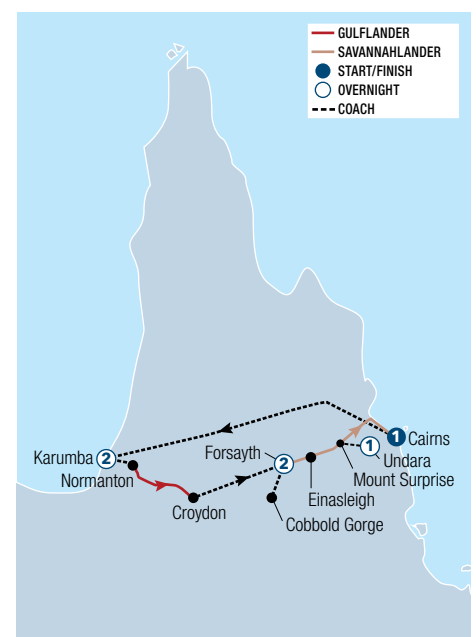
- Step aboard the iconic Gulflander and Savannahlander trains
- Enjoy a magnificent Gulf sunset in Karumba
- Wander through Croydon's heritage precinct
- Tour the old goldfield town of Forsyth
- Cruise through Cobbold Gorge on a solar powered boat
- See the rugged sandstone formations of Cobbold Gorge as you walk across the glass bridge
- Explore the oldest standing lava tubes on earth at Undara
- Learn the rich history of Aboriginal culture

INCLUDES

- One way travel on the Gulflander from Normanton to Croydon
- One way travel on the Savannahlander from Forsyth to Cairns
- 1 night 3½ star accommodation in Cairns
- 2 nights 4 star accommodation in Karumba
- 2 nights 3 star accommodation in Forsyth
- 1 night 3 star accommodation in Undara
- Meals as specified
- Karumba Hatchery Behind-the-Scenes Tour and Hand Feeding Experience
- 1 hour Forsyth By Night Tour
- 3 hour Cobbold Gorge Boat Cruise
- Afternoon Undara Lava Tubes Tour
- One way coach transfer from Cairns to Karumba
- One way coach transfer from Karumba to Normanton
- One way coach transfer from Croydon to Forsyth
- Return coach transfers from Forsyth to Cobbold Gorge
- Return coach transfers from Mount Surprise to Undara

Sole use prices also available.

[^]Day 6 overnight at Discovery Parks – Mount Surprise.



*FROM PRICES ARE A GUIDE ONLY, subject to change and availability and are in Australian Dollars. Prices for rail packages are per person per package twin share, unless otherwise specified and based on the lowest room category for travel in low season. For full terms and conditions including pricing, conditions and senior concession eligibility, refer to the Booking Conditions on the inside back cover of this brochure.

GULF SAVANNAH



Cobbold Gorge, Queensland

Courtesy of Tourism and Events Queensland



Savannahlander, Mount Surprise railway station, Queensland

Courtesy of Tourism and Events Queensland



Historic Village Herberton, Queensland

Courtesy of Tourism and Events Queensland

9 DAYS | CAIRNS TO CAIRNS

DEPARTS: 21, 28 May, 4, 11, 25 Jun, 2, 9, 16, 30 Jul, 20, 27 Aug, 3, 17, 24 Sep, 1 Oct 25

Adult/Senior

From \$4375*
per person twin share

HIGHLIGHTS

- Step aboard the Gulflander and Savannahlander trains
- Explore the Herberton Historic Village
- Take a sunset cruise on the Gulf of Carpentaria
- Stop at the historic Burke and Wills' northernmost campsite
- See the spectacular sandstone escarpments of Cobbold Gorge
- Visit the world's longest and largest lava tubes at Undara

INCLUDES

- One way travel on the Savannahlander from Mount Surprise to Forsyth
- One way travel on the Gulflander from Normanton to Crocydon
- 1 night 3 star accommodation in Atherton
- 1 night 3½ star accommodation in Georgetown
- 2 night 3 star accommodation in Karumba
- 1 night 3 star accommodation in Normanton
- 1 night 3 star accommodation Forsyth or Cobbold Gorge
- 1 night 3 star accommodation in Cobbold Gorge
- 1 night 2½ star accommodation in Undara
- Meals as specified
- Herberton Historic Village
- Karumba Sunset Cruise
- Cobbold Gorge Cruise
- Undara Lava Tubes Tour
- Air-conditioned vehicle

Sole use prices also available.

GULF SAVANNAH WANDERER 9 DAYS

Day 1: Cairns to Atherton (LD)

An early start this morning as you travel up the Kuranda Range to the Atherton Tablelands and on to Herberton. Explore the Historic Village of Herberton. Overnight in Atherton.

Day 2: Atherton to Georgetown (BLD)

This morning, head west on the Kennedy Highway to Mount Surprise, where you'll enjoy lunch and a snake show. Travel aboard the Savannahlander train as it tracks towards the former copper mining town of Einasleigh. Enjoy a refreshing drink at the pub or visit the sparkling Copperfield Gorge, before the train departs for Forsyth. Transfer from Forsyth to Georgetown for your overnight stay.

Day 3: Georgetown to Karumba (BLD)

Enjoy morning tea on the shore of Crocydon's Lake Belmore before lunch in Normanton. Established as a Gold Rush port, Normanton is the Gulf Savannah's largest town. Continue to Karumba for a spectacular Gulf sunset. Stay the next two nights at Karumba Lodge.

Day 4: Karumba (BLD)

After a leisurely breakfast take a cruise on the Gulf of Carpentaria. Spend time at the Barramundi Centre and join a guided Feed-A-Barra tour. Tour the hatchery for an educational, entertaining and engaging experience.

This afternoon, head out to Sunset Point for happy hour. The perfect place to enjoy a magnificent Gulf sunset. Tonight's dinner is at Karumba Lodge.

Day 5: Karumba to Normanton (BLD)

After breakfast, visit Burke & Wills Camp #119, the most northerly campsite of the ill-fated expedition of 1860.

It's then on to Normanton for lunch, followed by a visit to the Mutton Hole Wetlands for crocodile and bird watching. Overnight at Normanton.

Day 6: Normanton to Cobbold Gorge (BLD)

This morning, depart from Normanton's famous Victorian architecture railway station. Board the historic Gulflander RM93 train, for a ride through the savannah landscape across the Norman River to Critters Camp. On to Black Bull Siding, then the old gold mining town of Crocydon. Peek into pioneering history as you wander through Crocydon's Heritage Precinct. This afternoon, visit Georgetown and Forsyth on the way to Cobbold Gorge. Stay the next two nights at Cobbold Gorge.

Day 7: Cobbold Gorge (BLD)

Cruise the secluded waterway of Cobbold Gorge and see the spectacular 135-million-year-old sandstone cliffs. There is ample time to enjoy this beautiful area.

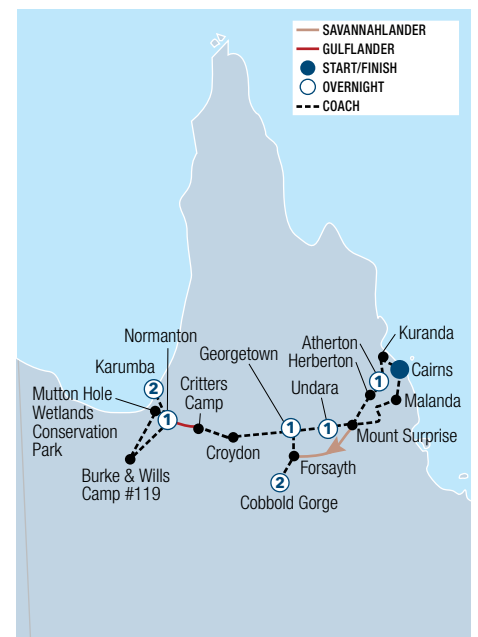
Day 8: Cobbold Gorge to Undara (BLD)

Today, travel via Einasleigh and Mount Surprise to the famous Undara Lava Tubes. Enjoy campfire entertainment after dinner before retiring to restored antique railway carriages or Pioneer cabins. Overnight at Undara.

Day 9: Undara to Cairns (BL)

After a bush breakfast, an experienced Savannah Guide will meet you for a tour of the world's largest, longest and most accessible lava tube system. Continue the scenic drive over the Tropical Tablelands past the Wind Turbines at Ravenshoe, stopping off at the magnificent Curtain Fig Tree, before returning to Cairns where your tour concludes.

(B = breakfast, L = lunch, D = dinner)



* FROM PRICES ARE A GUIDE ONLY, subject to change and availability and are in Australian Dollars. Prices for rail packages are per person per package twin share, unless otherwise specified and based on the lowest room category for travel in low season. For full terms and conditions including pricing, conditions and senior concession eligibility, refer to the Booking Conditions on the inside back cover of this brochure.



Westlander



Big Rig, Roma, Queensland

Courtesy of Tourism and Events Queensland

NORTH WEST & SOUTH WEST QUEENSLAND

Head to North West Queensland, one of the world's richest mineral-producing regions, for a taste of outback mining life. In Mount Isa, venture underground to explore the history of mining and learn about the good and hard times of the people working deep under the earth's surface. Explore the many exhibits at the Outback at Isa complex. Head to Lake Moondarra and take in a spectacular outback sunset.

Journey west of Brisbane and discover where country meets the outback. Roma is known as the birthplace of Australia's oil and gas industry and home to the country's largest cattle yards. Perch on a fence and watch the action at the Roma Saleyards. Hear heroic stories of oil drilling and exploration at The Big Rig. Hidden in the rugged ranges, Carnarvon Gorge features towering sandstone cliffs, vibrantly coloured gorges, an abundance of native wildlife and fascinating Aboriginal rock art.

Charleville is the perfect place to discover the rugged outback landscape. Cast your eyes to the clear outback sky at the Cosmos Centre and Observatory and learn about Charleville's smallest residents, the bilbies, at the Charleville Bilby Experience.



Bilby, Charleville, Outback, Queensland



Bilby, Charleville, Outback, Queensland

Courtesy of Tourism and Events Queensland/Sean Scott

NORTH WEST & SOUTH WEST QUEENSLAND



Inlander



INLANDER RAIL JOURNEY

Step aboard the Inlander and journey from the tropical city of Townsville to the prominent mining hub of Mount Isa. Wonder at the rugged yet beautiful inland scenery on your journey past Charters Towers, through the Great Dividing Range and into the landscapes of the northern Outback.

FEATURES INCLUDE

- Lounge car
- Large panoramic windows
- Drinking fountains
- Shower and toilet facilities

ECONOMY SEAT

- Comfortable reclinable seat with footrest, tray table, 240-volt power point and reading light
- Complimentary snack pack served at meal times
- One item of checked-in luggage and one carry-on item



TIMETABLE

TOWNSVILLE TO MOUNT ISA (OVERNIGHT)

DEPARTS	WED, SAT
Townsville	12:40pm
Arrive Mount Isa	9:35am

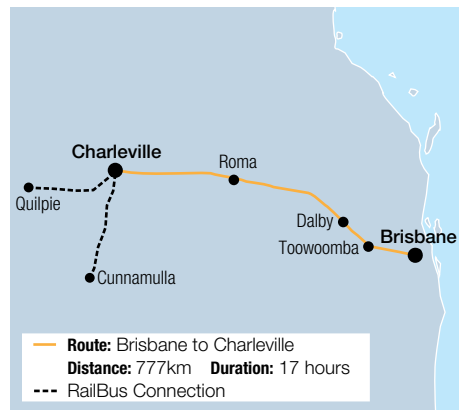
MOUNT ISA TO TOWNSVILLE (OVERNIGHT)

DEPARTS	THU, SUN
Mount Isa	1:30pm
Arrive Townsville	10:10am

Timetable is correct at time of printing and is subject to change without notice. For information on the latest fares and availability, please ask your travel agent.



Westlander



WESTLANDER RAIL JOURNEY

Venture across Queensland's South-West Outback aboard the Westlander. This scenic journey from Brisbane travels across the Great Dividing Range, through the rich farmlands of the Darling Downs to western towns of Dalby, Roma and Mitchell, before reaching Charleville. Travel in the comfort of an Economy Seat and relax in the lounge carriage. Escape the city and enjoy the adventure of an outback rail journey.

FEATURES INCLUDE

- Lounge car
- Large panoramic windows
- Drinking fountains
- Shower and toilet facilities

ECONOMY SEAT

- Comfortable reclinable seat with footrest, tray table and reading light
- Complimentary snacks packs served at meal times
- One item of checked-in luggage and one carry-on item



TIMETABLE

BRISBANE TO CHARLEVILLE (OVERNIGHT)

DEPARTS	TUE	THU
Brisbane	7:15pm	6:55pm
Roma	6:20am	6:20am
Arrive Charleville	11:50am	11:50am

CHARLEVILLE TO BRISBANE (OVERNIGHT)

DEPARTS	WED	FRI
Charleville	6:10pm	6:10pm
Roma	11:35pm	11:35pm
Arrive Brisbane	11:40am	11:25am

Timetable is correct at time of printing and is subject to change without notice. The RailBus Coach Connection provides a transfer from Charleville to Cunnamulla and Quilpie. For information on the latest fares and availability, please ask your travel agent.



Arch Rock, Carnarvon Ranges, Queensland

ROMA EXPLORER 5 DAYS

Day 1: Brisbane to Roma

Board the Westlander and journey overnight to Roma.

Day 2: Roma (B)

Arrive in Roma and transfer to your accommodation. After checking in, spend the morning at leisure exploring this outback town. In the afternoon join the Big Rig Ultimate experience tour. Take a journey through time and learn about Australia's first discovery of petroleum and the exploration of oil and gas. This evening, enjoy an entertaining sound and light journey and learn of the remarkable triumphs of the men and women of Roma. Stay the next two nights at Roma Explorers Inn.

Day 3: Roma (B)

This morning, share a few hours with a Roma local for an insight into the colourful history and present-day activities in and around this outback town. Visit hidden treasures like Heroes Avenue, the Biggest Bottle Tree

and Lake Neverfill. Enjoy morning tea in the beautiful Roma Bush Gardens.

Day 4: Carnarvon Ranges (BL)

Today, head to the Carnarvon Ranges for a full day guided tour. With exclusive access to a large privately-owned cattle property nestled in the Carnarvon Ranges, this is a great introduction to Outback Queensland. Explore secluded gorges, amazing rock formations and unique Aboriginal rock art. This evening, transfer to Roma railway station for your journey back to Brisbane aboard the Westlander.

Day 5: Brisbane

Arrive into Brisbane late morning, where your tour concludes.

(B = breakfast, L = lunch)

5 DAYS | BRISBANE TO BRISBANE

DEPARTS: Tuesdays (1 Apr – 3 Nov 25, 3 – 31 Mar 26)

Adult **From \$969***
per person twin share

Senior **From \$919***
per person twin share

HIGHLIGHTS

- Spend the day exploring the Carnarvon Ranges
- Venture to the top of The Big Rig Tower and take in the expansive views of the outback landscape
- Enjoy an evening light and sound show

INCLUDES

- Return travel on the Westlander from Brisbane to Roma – Economy Seat
- 2 nights 4 star accommodation in Roma
- Meals as specified
- Explore Roma Town Half Day Tour
- Big Rig Ultimate Experience Tour
- Full day Lost World Carnarvons Tour
- Return coach transfers from Roma railway station to accommodation

Sole use prices also available.



Charleville, Queensland

CHARLEVILLE EXPERIENCE 5 DAYS

Day 1: Brisbane to Charleville

Board the Westlander this evening and journey to the outback town of Charleville.

Day 2: Charleville (LD)

Arrive in Charleville and transfer to your accommodation. Enjoy a country hospitality RSL lunch, followed by an Outback Sungazing tour. Tonight, you will be treated to an authentic Drover's dinner before heading to the Cosmos Centre for a star gazing experience. Stay the next two nights at Cobb & Co Outback Cabins and Tourist Park, Charleville.

Day 3: Charleville (BD)

Visit the Charleville Bilby Experience and spend time in the nocturnal house and observe the bilbies during their night-activities. Take a guided tour of the former WWII secret military base to learn about the region's war history. Walk through the Royal Flying Doctors Museum. Tonight, you will receive a barbecue pack to cook on the barbecue at your accommodation.

Day 4: Charleville to Brisbane (B)

This morning, take a tour of a working date plantation before enjoying a delicious morning tea. Take a leisurely stroll around town visiting the Historic House Museum and see displays of a by-gone era. Learn all about Cobb & Co coaches and the impact they had on the town (own expense). Finish your outback adventure by going behind the scenes on a History and Stories tour of the iconic Coronet Hotel. This evening transfer to the Charleville railway station for the overnight journey back to Brisbane on the Westlander.

Day 5: Brisbane

Arrive in Brisbane late morning, where your tour concludes.

(B = breakfast, L = lunch, D = dinner)

5 DAYS | BRISBANE TO BRISBANE

DEPARTS: Tuesdays (1 Apr – 30 Sep 25)+

Adult **From \$945***
per person twin share

Senior **From \$915***
per person twin share

HIGHLIGHTS

- Enjoy stargazing at the Cosmos Centre observatory
- Join a WWII tour of Charleville's wartime history
- Go behind the scenes of the historic Coronet Hotel

INCLUDES

- Return travel on the Westlander from Brisbane to Charleville – Economy Seat
- 2 nights 3½ star accommodation in Charleville
- Meals as specified
- Cosmos Centre Sungazing Tour
- Cosmos Centre Evening Star Gazing Tour
- Bilby Experience
- WWII Secret Base Tag-a-Long Tour
- Royal Flying Doctors Museum
- Date Farm Tour with morning tea
- History and Stories Tour
- Return transfers from Charleville railway station to accommodation

Sole use prices also available. + Blockout dates apply.



SOUTH WEST QUEENSLAND



St George Heritage Trail, St George, Queensland

Courtesy of Tourism and Events Queensland



Cosmos Centre, Charleville, Queensland

Courtesy of Tourism and Events Queensland



Eromanga Natural History Museum, Eromanga, Queensland

Courtesy of Tourism and Events Queensland

8 DAYS | BRISBANE TO BRISBANE

DEPARTS: 26 Apr, 14, 28 Jun, 26 Jul, 30 Aug 25

Adult	From \$5089* per person twin share
Senior	From \$5075* per person twin share

HIGHLIGHTS

- Cruise along the Balonne River, St George
- Take a station tour around Toogunna Plains Farmstay
- Visit the Cosmos Centre observatory
- Explore the Eromanga Natural History Museum
- Spend time on a working date farm

INCLUDES

- One way travel on the Westlander from Charleville to Brisbane – Economy Seat
- 1 night 4½ star accommodation in Brisbane
- 2 nights 4 star accommodation in St George
- 1 night 4 star accommodation in Thargomindah
- 1 night accommodation at Toogunna Plains Farmstay
- 1 night 4 star accommodation in Charleville
- Meals as specified
- Riversands Winery Tour
- Balonne River Nature Cruise
- Admission to Cunnamulla Fella Centre
- Eromanga Natural History Museum Guided Dinosaur Tour
- Cosmos Centre Big Sky Twilight Session
- WWII Secrets Tour
- Admission to Royal Flying Doctor Service Museum
- Historic Corones Hotel Tour
- Meet the Bilby Experience
- Charleville Date Farm Tour
- Travel by luxury coach
- Savannah Guide Driver and Host

Sole use prices also available.

GREAT SOUTHWESTERN ADVENTURE 8 DAYS

Day 1: Brisbane (D)

Arrive in Brisbane and settle into your hotel and relax, before tonight's welcome dinner. Meet fellow travellers and learn about the adventures ahead with a comprehensive tour briefing by your Savannah Guide. Overnight at Royal on the Park, Brisbane.

Day 2: Brisbane to St George (BLD)

This morning, experience the changing landscapes as you cross the Great Dividing Range, and through the Darling Downs to St George, the gateway of the Outback. Visit the newly restored Anchorage Homestead before enjoying an exclusive dinner. Stay the next two nights at Riverland Motor Inn, St George.

Day 3: St George (BLD)

Today take in the highlights of the St George area including a visit to the famous 'Unique EGG', a museum displaying hand carved emu eggs. Embark on an informative Cotton and Vineyard tour before enjoying lunch at Riversands Winery, located on the banks of the Balonne River. Late afternoon, transfer to the Balonne River and board the Balonne Baroo Andoo for a sunset nature cruise.

Day 4: St George to Thargomindah (BLD)

After breakfast travel to Cunnamulla and discover the rich culture and heritage of the region at the Cunnamulla Fella Museum. Continue onto the town of Eulo and visit the historic Eulo Queen Hotel before arriving in Thargomindah. Take a town tour and see the Artesian Hydro Power Plant, believed to be the oldest, working unit in Australia. Overnight at Oasis Motel, Thargomindah.

Day 5: Thargomindah to Toogunna Plains Farmstay (BLD)

This morning, stop by the Heritage listed Nocundra Hotel before travelling to Eromanga, the furthest town from the sea and home to Australia's largest dinosaur.

Get up close to a 95-million-year-old dinosaur bone on the Australian Dinosaur Giant's Tour at the Eromanga Natural History Museum. Wander the Interpretive Corridor and see the Multi-Media Theatre Experience. Continue onto Toogunna Plains Farmstay, a fourth-generation family-owned sheep and cattle property. Take an exclusive sunset tour and enjoy the panoramic views of the vast open plain and marvel at the dazzling outback colours over the rolling red sand hills. Overnight at Toogunna Plains Farmstay.

Day 6: Toogunna Plains Farmstay to Charleville (BLD)

Journey to Quilpie and embark on a town tour and visit St Finbarr's Church, home to the stunning Opal Alter. Pass through Mulga ridges as you travel to Charleville. On arrival, take a tour of the United States Army Air Force top secret base and understand why they chose Charleville as a WWII base and learn about the highly classified computerised bomb aimer. Tonight, see the incredible night sky brought into focus with the help of powerful Meade telescopes at the Cosmos Centre. Overnight at Mulga Country Motor Inn, Charleville.

Day 7: Charleville to Brisbane (BL)

After breakfast, take a tour of a date farm and learn about water conservation and the growing of dates. Enjoy a delicious date loaf for morning tea. Visit the Charleville Bilby Experience and see Australia's iconic bilbies in their nocturnal house. Step inside the famous Hotel Corones, built during Charleville's wool industry boom. After lunch, wander through the Royal Flying Doctor Service Museum. In the evening, board the Westlander for your rail journey to Brisbane.

Day 8: Brisbane

Arrive in Brisbane where your tour concludes.

(B = breakfast, L = lunch, D = dinner)



* FROM PRICES ARE A GUIDE ONLY, subject to change and availability and are in Australian Dollars. Prices for rail packages are per person per package twin share, unless otherwise specified and based on the lowest room category for travel in low season. For full terms and conditions including pricing, conditions and senior concession eligibility, refer to the Booking Conditions on the inside back cover of this brochure.

Please read these Booking Conditions carefully as they apply to all bookings with Viva Holidays.

HOW TO BOOK

Contact your ATAS travel agent and request a reservation. All verbal quotes provided are an estimate only and subject to change until confirmed in writing.

PRICES & CONDITIONS

This brochure was produced on 28 November 2024. Unless otherwise stated, prices are in Australian dollars and include GST where applicable. All prices are subject to availability, subject to change and can be withdrawn or varied without notice. Prices are to be used as a guide only. Accommodation prices are based on the lowest room category in low season. All other prices are based on travel in low season. Price changes may occur by reason of matters outside our control which increase the cost of the Product or Service. Such factors include (without limitation) adverse currency fluctuations, fuel surcharges, or increase to taxes. Surcharges and minimum stays may apply due to demand, Christmas and New Year's Eve, school and public holidays, special events and other circumstances. All prices are the lowest available prices at the time of print and are a guide only. Please check all prices, availability, fees, conditions and information with your travel agent before booking.

If we must change any part of your booking for reasons beyond our control, for example, an Accommodation Supplier overbooks accommodation, or if there is an increase in taxes or Supplier charges, we will notify you. If any such changes result in your holiday costing more or otherwise being materially different from that originally booked, you may cancel the booking and we will refund any monies already paid less any charges levied by Suppliers.

PRICES DO NOT INCLUDE

Anything not specifically indicated as being an inclusion.

CONCESSION RAIL FARES

Australian Pensioner Concession Card holders, Government Senior Card holders, Queensland Pensioner Concession Card holders and Queensland Government Senior Card holders may be entitled to concession fares. To qualify for concession fares, an Australian Concession Card must be presented at the time of booking; must be valid at the time of travel and must be carried at all times during travel.

Queensland residents who hold a current Queensland Pensioner Concession Card are entitled to four rail entitlements each calendar year. These entitlements may be combined to provide two return Economy Seat journeys or one Business Seat return journey. Additional charges apply for Sleepers, RailBeds and meals. A non-refundable administration fee applies for every entitlement. This entitlement can be combined with all holiday packages available in this brochure. Please check with us or your travel agent when booking.

Not all sectors are included in arrangements for the funding of concessions. Funding for concessions may be withdrawn subsequent to the production of this brochure and any prices quoted may therefore change, without notice.

OMISSIONS & ERRORS

While every effort is made to ensure the accuracy and currency of the information in the brochures, errors or omissions may occur. All errors and omissions identified post the date of publication are notified to our retail partners to advise you. Please check with your agent for all up-to-date corrections, including prices and inclusions.

DEPOSITS & FINAL PAYMENTS

Deposit

A minimum non-refundable deposit of \$55 per person is payable within 7 days of confirmation of your booking. You will be notified at the time of booking if any additional deposit is required. All deposits are non-refundable for changes of mind or cancellations by you (subject to your rights under the Australian Consumer Law).

Final Payment

Final payment of your holiday cost is required no later than 30 days prior to departure (90 days for Ultimate Outback Queensland Adventure) or by sale end date or by the payment deadline specified in individual package conditions, whichever is earlier. Some services may require full payment at the time of booking. For bookings made less than 31 days prior to travel (91 days for Ultimate Outback Queensland Adventure), full payment of holiday cost is required at the time your booking is confirmed.

Please ensure payments are made by the due dates. If this does not happen, our system will automatically cancel the booking without notice or liability to you.

Only upon payment of the full cost of your holiday do you have a final booking with the Supplier of the relevant good and/or service. In arranging your booking, Viva Holidays is acting as the agent of the Supplier of the relevant Product and at no time do you have a contract with Viva Holidays.

CREDIT & DEBIT CARD SURCHARGES

A fee will apply for payments made by debit and credit cards. Fees may vary depending on card type. Please check this fee with us or your travel agent when booking.

FEES

Amendment Fees

If you wish to change your booking prior to departure, an amendment fee of \$30 will be charged if the overall value of the booking remains the same or decreases, in addition to any fees imposed by the Supplier of each service booked.

Late Booking Fees

A fee of \$30 will be charged for all bookings made less than 7 days prior to travel.

All fees can be varied without notice.

CANCELLATIONS & REFUNDS

Prior to Final Payment

Your deposit is forfeited.

After Final Payment

There will be no refund of your deposit, in addition to any fees imposed by the Supplier, which may be up to 100% of monies paid.

After Travel

There will be no refund if you cancel your booking once travel has commenced. There will be no refund for unused services, except for OPEN DATED services where the service was not booked with the Supplier. Requests for refunds received more than 6 months after departure date will not be accepted.

Should a refund after departure be approved, a \$110 refund processing fee will apply.

RESPONSIBILITY

Viva Holidays acts as an agent for the Suppliers (transport, tour, event or accommodation providers) who provide the various goods and/or services (Products). All bookings are subject to the terms and conditions and limitations of liability imposed by each Supplier. It is therefore important for you to obtain and read the applicable Supplier's terms and conditions as they may limit or exclude their liability to you.

In producing this brochure, we have used information provided by Suppliers. Irrespective of any measures taken by us to ensure the information contained in this brochure is accurate at the time of printing, Viva Holidays disclaims and will be exempt from liability in respect of anything misleading, false, incomplete or inaccurate and any errors, misdescription and all associated disappointment, loss, expense, damage, inconvenience, delay, death, shock, illness or injury, however caused.

Viva Holidays does not control the manner in which Products featured within this brochure are provided. Viva Holidays disclaims and will be exempt from liability for anything to do with the supply of such Products. This includes liability (whether as a matter of contract, tort, statute, restitution, or otherwise) for any direct, indirect or consequential loss, liability, claim, cost, expense, proceeding, demand, penalty, disappointment, death, injury, illness, shock, inconvenience or delay. This limitation of liability also applies irrespective of the cause, including negligence of us or a Supplier, withdrawal, cancellation or failure to provide a Product, delay, any variation in the Product, the provision of substitute Products or a change in the Supplier. Without limitation, Viva Holidays will not be responsible if the Product is not available due to inclement weather conditions or other acts of God, civil disturbances, fire, floods, acts of Government or any other authorities, accident to or failure of machinery or equipment or industrial action.

CONDITIONS OF CARRIAGE

Full Queensland Rail Travel terms and conditions may be obtained from Viva Holidays. By booking train travel through Viva Holidays you agree to be bound by Queensland Rail Travel's Conditions of Carriage.

MAPS & PHOTOGRAPHS

The maps in this brochure are intended as a guide only and are not to scale. They do not necessarily reflect actual routings or accommodation or attraction locations. Accommodation room photographs are representative only and actual rooms occupied may vary in decor and inclusions from those shown.

Some images used in this brochure are supplied courtesy of tourist bureaus, hotels, tour operators, Tourism and Events Queensland, Tourism Tropical North Queensland, Brisbane Marketing, Brad Newton, Brooke Miles Photography, David Fryer, Erik Williamson Photography, Global Headquarters, Jack Harlem (FIRME Agency), Jesse Lindemann, Jina Ihm, John Carnemolla, Katie Purling, Mad Dog Productions, Marie-Flore Pirmez, Mauro Risch Photography, Ray Miller, Sean Scott and Stuart Ireland.

PRODUCT DESCRIPTIONS

Product descriptions and accommodation ratings featured in this brochure are provided by the individual Suppliers. Facilities, features or ratings are subject to change at any time. Tours may not operate on certain dates and durations and departure times are approximate only. You should check at the time of booking for any changes to published information of which we may be aware.

BONDS

Bonds or credit card imprints are required by most Suppliers at the time of check-in to cover incidentals and fees not included in your holiday cost.

TRANSFERS & TOURS

Some Accommodation Suppliers provide courtesy transfers to/from the airport. It is essential that these transfers are pre-booked. Some Tour Suppliers provide complimentary pick up and return to your holiday accommodation and require a minimum number of passengers to operate. If minimum numbers are not achieved tours may be cancelled at short notice. Additionally, some Suppliers reserve the right to cancel departures for other reasons, including bad weather. Some tours and itineraries may also vary and attractions may be substituted due to seasonal conditions. Viva Holidays will not be held liable for a service variation, cancellation, delay or withdrawal, or a Supplier's failure to notify you. A full refund applies for the cancelled tour.

TRAVEL INSURANCE

We strongly recommend you take out appropriate travel insurance to cover your travel arrangements.

LUGGAGE

The following checked-in luggage limits apply (not exceeding 20kg and 180 linear cm per piece):

Economy Seat – one item per person; Business Seat, Sleeper and Railbed – two items per person. An additional fee will apply to excess luggage (subject to approval).

Checked-in luggage cannot be accessed for the duration of the rail journey, so you should bring a carry-on bag containing everything you need while on the train. Carry-on luggage is limited to one item per person and must not exceed 20kg (dimensions 23cm x 34cm x 48cm). If you require assistance with your carry-on luggage, please limit the weight to 7kg or less. Refer to the following website for more information: <https://www.queenslandrailtravel.com.au/PolicyCentre/Pages/Luggage.aspx>

PRIVACY

Viva Holidays collects information about you (including health information where necessary) to provide products and services to you, process your travel arrangements, facilitate your participation in loyalty programs and conduct marketing activities and market research. If the information is not provided, Viva Holidays may not be able to provide the Service requested. Viva Holidays may disclose your personal information to its related companies, carriers, travel service providers, organisations which provide services to Viva Holidays (more details are available in our Privacy Statement on our website viva.com.au) and various law enforcement agencies, airports and governments around the world for security, customs and immigration purposes. You may gain access to the information Viva Holidays holds about you by contacting our Privacy Officer in writing at 179 Normanby Road, South Melbourne VIC 3205 Australia or on privacyofficer@viva.com.au.

MONIES NOT HELD ON TRUST

All monies paid by you to us will be the property of Viva Holidays and will be a debt due and payable to the relevant Supplier (contingent on availing) once the services to which the money relates have been availed, or the relevant booking is cancelled (subject to cancellation fees). You agree and acknowledge that such monies will not be held by Viva Holidays on trust for or on behalf of you, and we may hold such monies in any account as we see fit, including with our own and/or other customer monies.

GOVERNING LAW

These conditions are governed by the laws of New South Wales, Australia and any action arising under them or in any way connected with a booking may be brought only in a court in New South Wales, Australia, subject to any law which is expressly inconsistent with this.

You acknowledge that you are 18 years of age or older and that you understand and agree with the above terms and conditions and our Privacy Policy. Please read our full booking terms and conditions at viva.com.au/policies/booking-conditions.

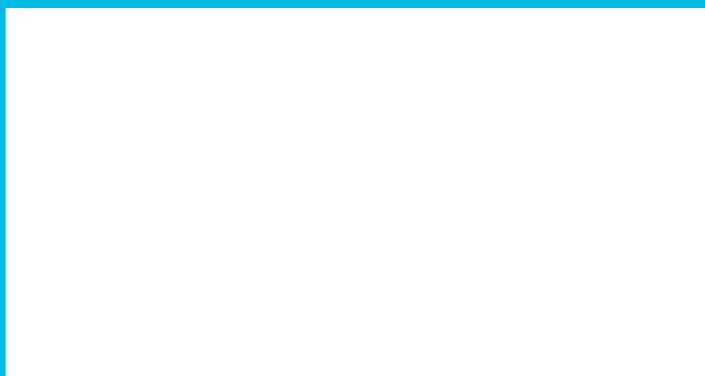


📍 Gulflander, Normanton

Discover Queensland by rail

Get ready to take an unforgettable rail holiday, filled with adventure, natural wonders, and hidden treasures. Enjoy stunning scenery from the outback to the reef, our pristine coastline or lush tropical rainforests. No matter what the season, there is a Queensland rail holiday waiting for you. Come with us and discover more of Queensland by rail.

We acknowledge the Traditional Owners of the country we traverse. We pay respect to Elders past, present and future. We acknowledge their spiritual connection to the lands and waterways and ask their ancestors to watch over us as we tread lightly on Country.



helloworld
TRAVEL
THE TRAVEL PROFESSIONALS

In store 13 14 15 helloworld.com.au

WE'RE PROUD TO BE **ATAS** travel accredited

VIVA
HOLIDAYS